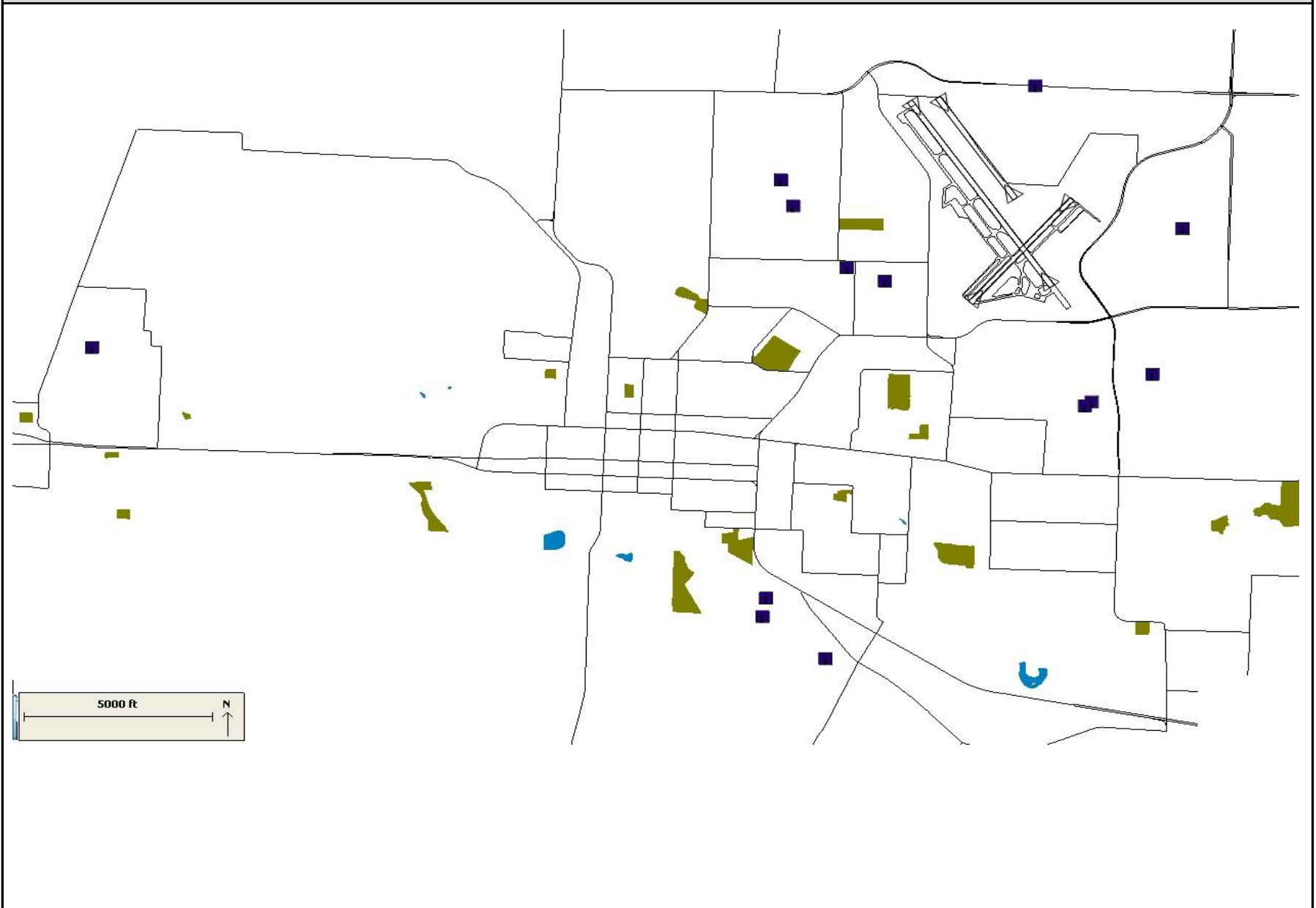
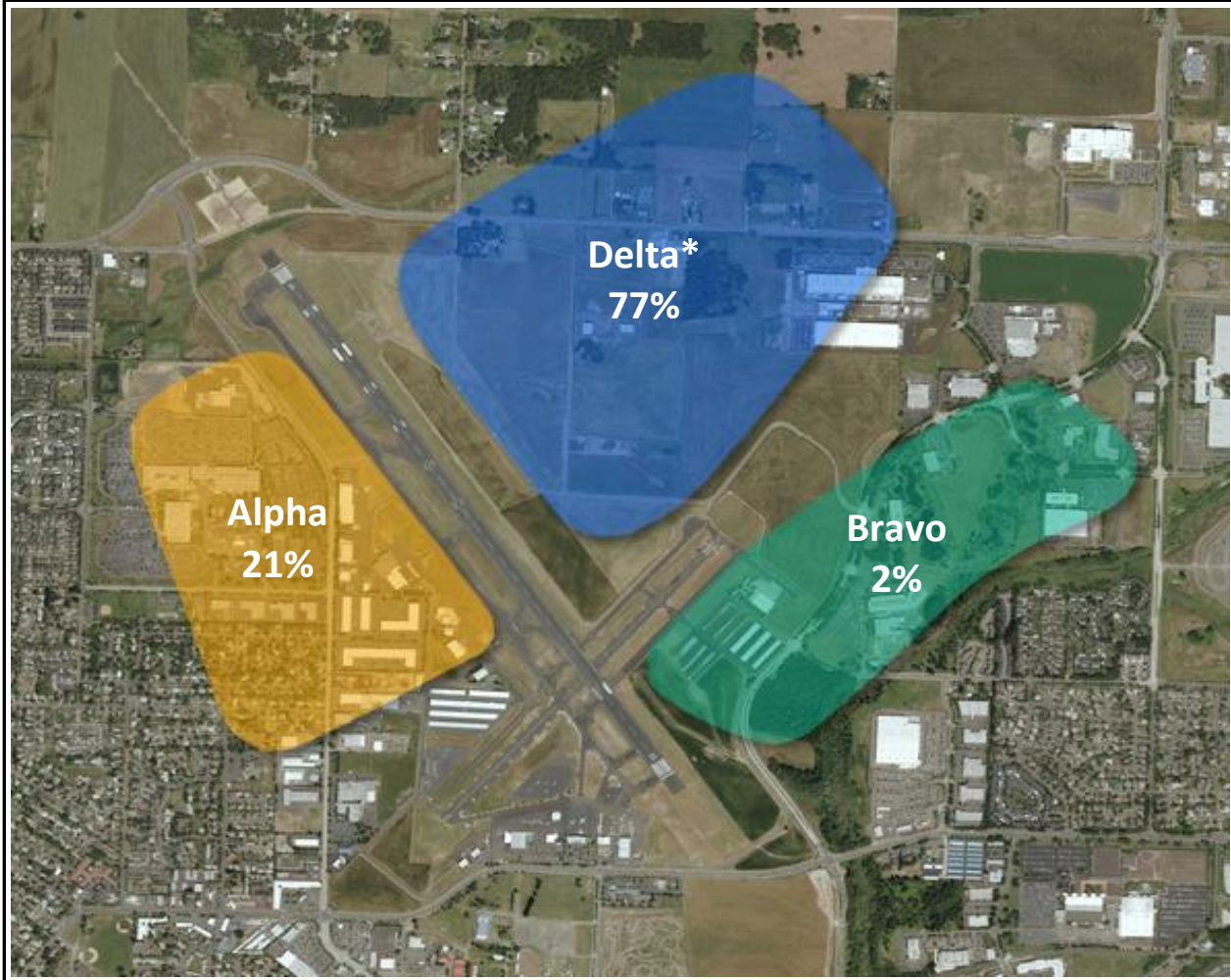


# Q1 - 2016 HIO NOISE COMPLAINT LOCATIONS



# HILLSBORO HELICOPTER PATTERN UTILIZATION - Q1, 2016

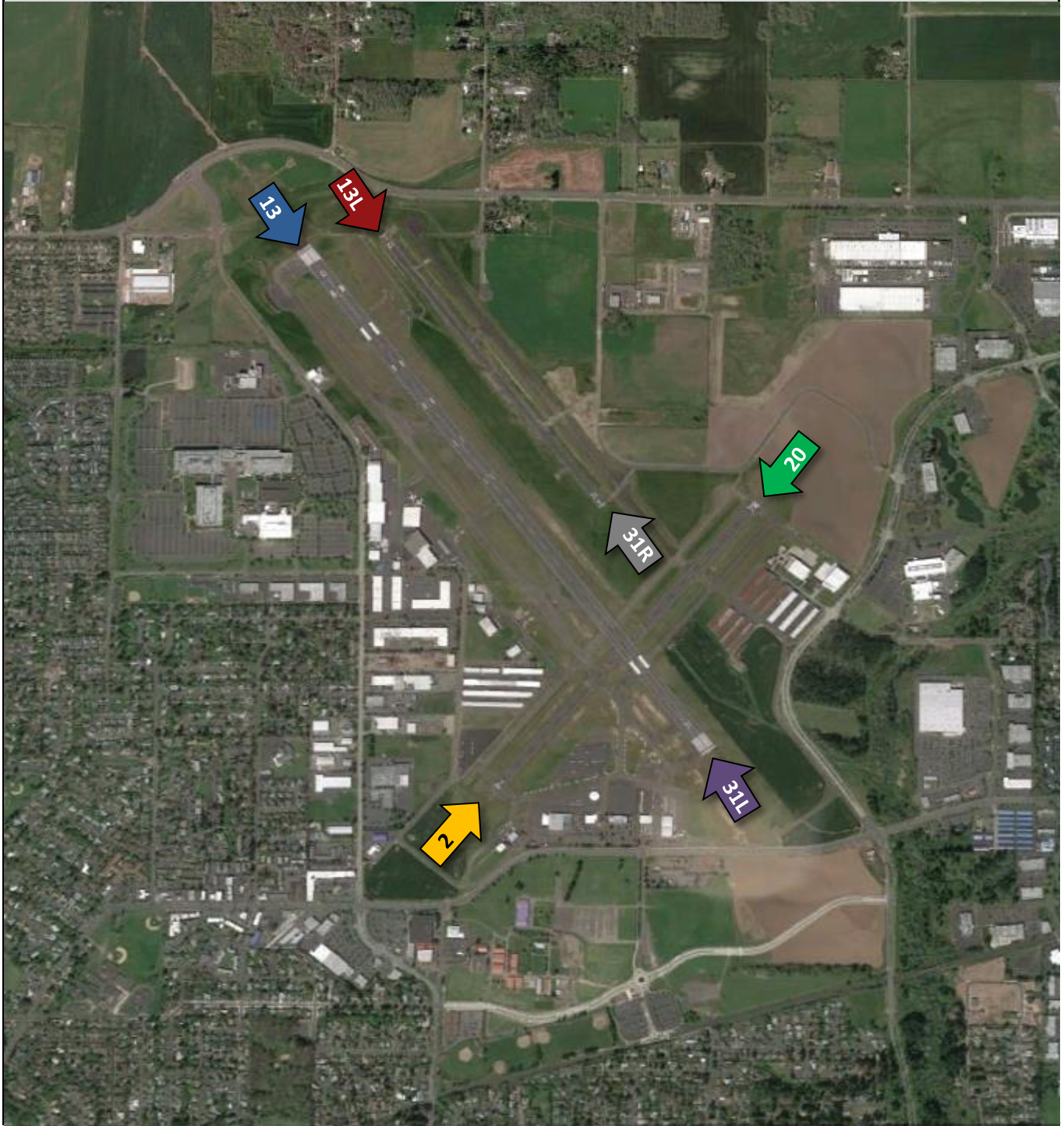


Month	Alpha		Bravo		Delta*		Total
	Count	Percent	Count	Percent	Count	Percent	
Jan	1019	22%	85	2%	3443	76%	4547
Feb	992	24%	113	3%	3046	73%	4151
Mar	683	16%	100	2%	3601	82%	4384
<b>Q1</b>	<b>2694</b>	<b>21%</b>	<b>298</b>	<b>2%</b>	<b>10090</b>	<b>77%</b>	<b>13082</b>
Apr							0
May							0
Jun							0
<b>Q2</b>	<b>0</b>		<b>0</b>		<b>0</b>		<b>0</b>
Jul							0
Aug							0
Sep							0
<b>Q3</b>	<b>0</b>		<b>0</b>		<b>0</b>		<b>0</b>
Oct							0
Nov							0
Dec							0
<b>Q4</b>	<b>0</b>		<b>0</b>		<b>0</b>		<b>0</b>
<b>YTD</b>	<b>2694</b>	<b>21%</b>	<b>298</b>	<b>2%</b>	<b>10090</b>	<b>77%</b>	<b>13082</b>

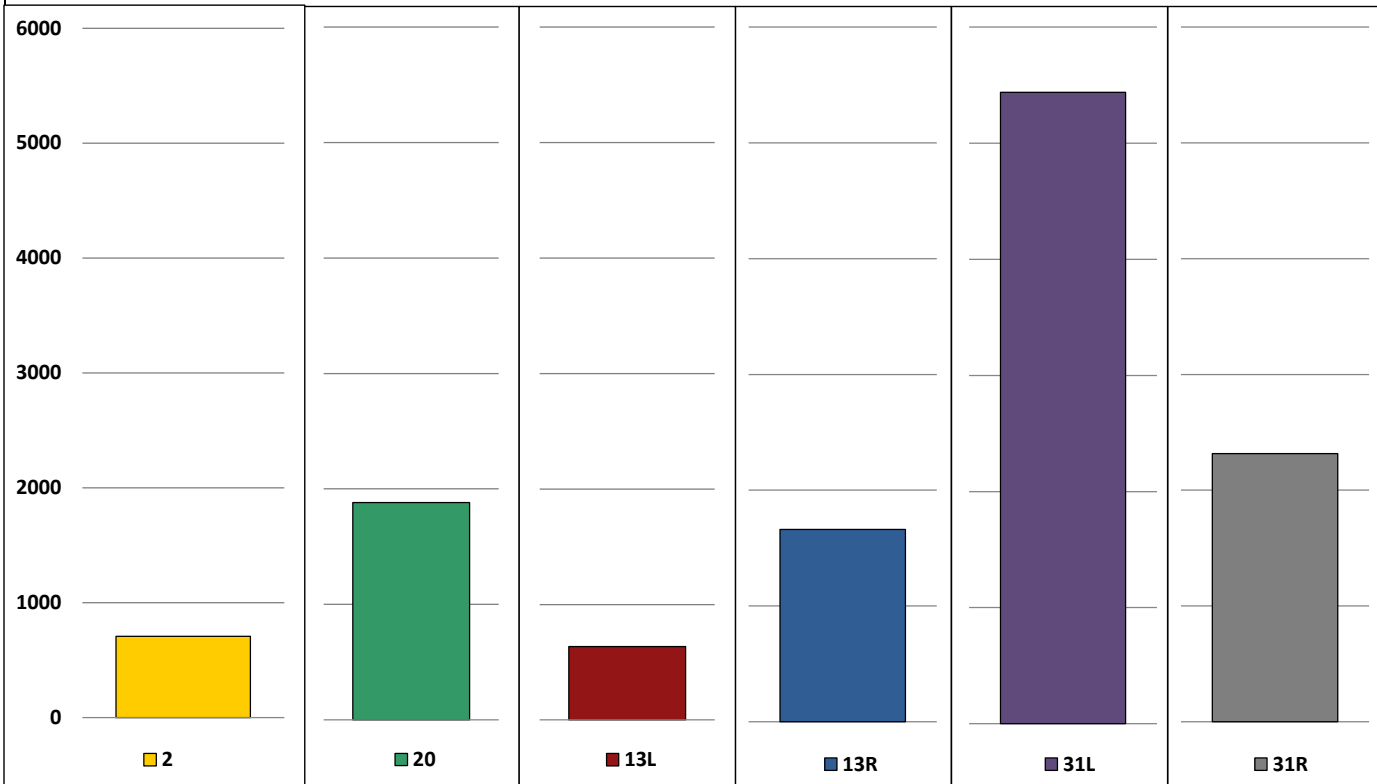
\* Charlie pattern was renamed Delta with the opening of runway 13L / 31R on 4/30/15



# HILLSBORO AIRPORT RUNWAY LAYOUT



## Combined Runway Utilization, Q1 - 2016

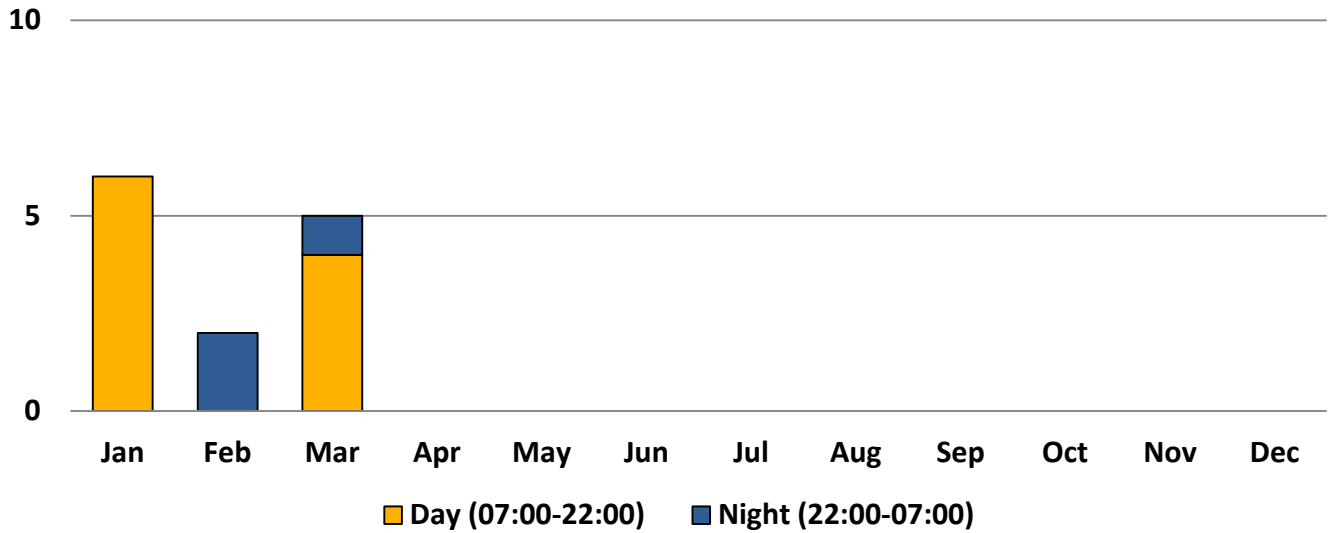


		Jan	Feb	Mar	Q1	Apr	May	Jun	Q2	Jul	Aug	Sep	Q3	Oct	Nov	Dec	Q4	YTD
2	Ops Count	258	179	270	707				0				0				0	707
	Percentage	6%	5%	6%	6%													6%
20	Ops Count	602	550	731	1883				0				0				0	1883
	Percentage	15%	15%	15%	15%													15%
13L	Ops Count	238	144	254	636				0				0				0	636
	Percentage	6%	4%	5%	5%													5%
13R	Ops Count	646	297	719	1662				0				0				0	1662
	Percentage	16%	8%	15%	13%													13%
31L	Ops Count	1581	1890	1968	5439				0				0				0	5439
	Percentage	38%	50%	42%	43%													43%
31R	Ops Count	820	708	787	2315				0				0				0	2315
	Percentage	20%	19%	17%	18%													18%
All	Total	4145	3768	4729	12642	0	0	0	0	0	0	0	0	0	0	0	0	12642

Notes: 1) Runway 13L / 31R became operational on April 30, 2015. 2) Counts reflect total operations, divide in half to estimate arrivals and departures. 3) Relatively short distance between the parallel runways limits ability to accurately separate their operations counts.

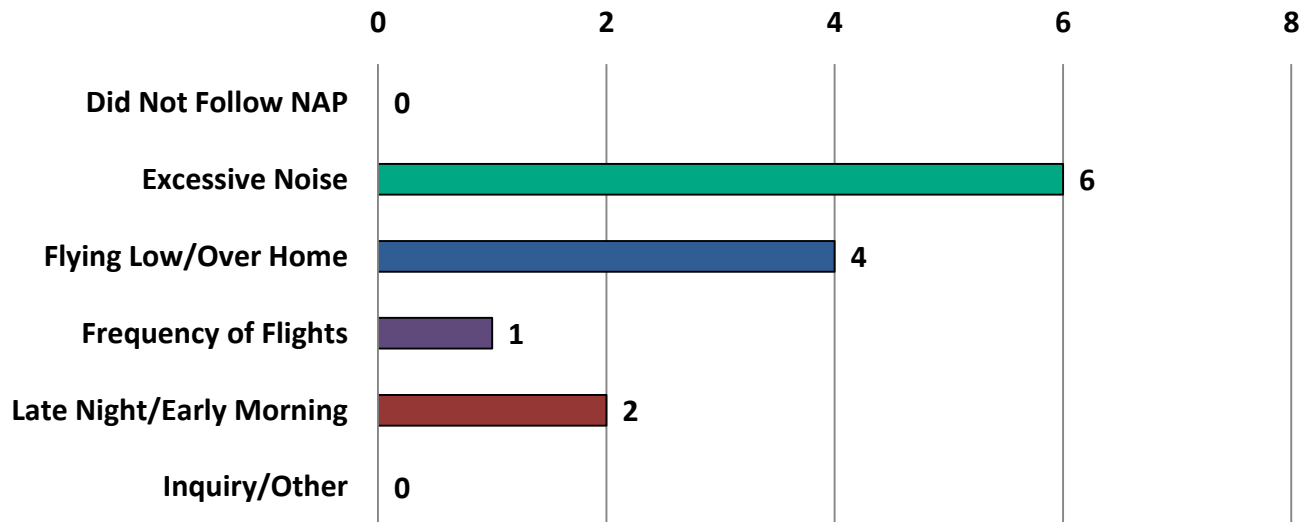


## HIO SUBMISSIONS BY TIME OF DAY



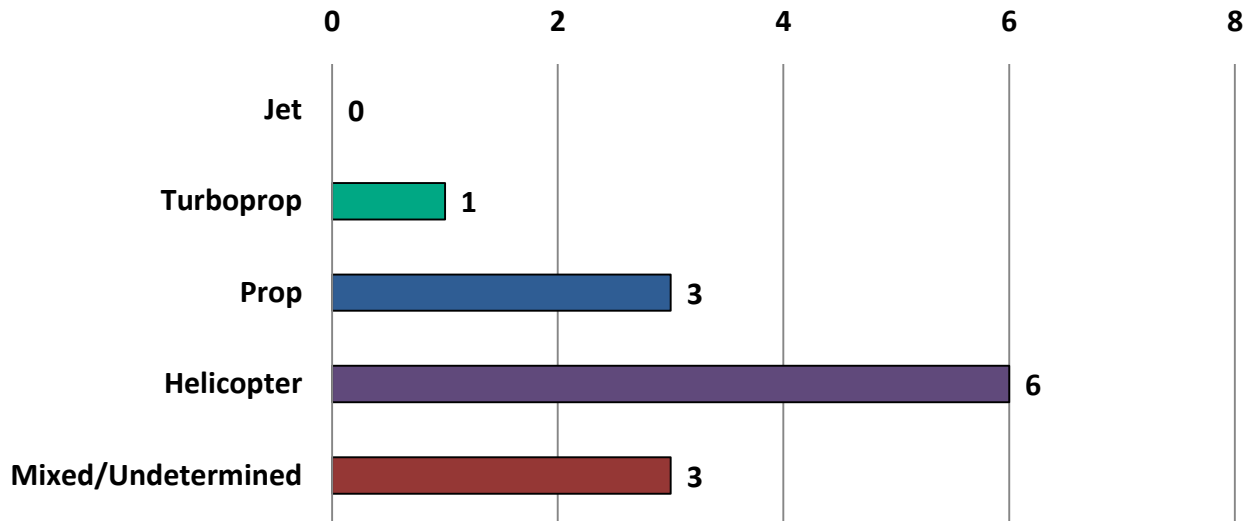
	Jan	Feb	Mar	Apr	May	Jun	Jul	Aug	Sep	Oct	Nov	Dec
Day (07:00-22:00)	6	0	4									
Night (22:00-07:00)	0	2	1									

## HIO SUBMISSIONS BY MAIN CONCERN Q1 - 2016



	Q1	Q2	Q3	Q4
Did Not Follow NAP	0			
Excessive Noise	6			
Flying Low/Over Home	4			
Frequency of Flights	1			
Late Night/Early Morning	2			
Inquiry/Other	0			

## HIO SUBMISSIONS BY AIRCRAFT CATEGORY Q1 - 2016



	Q1	Q2	Q3	Q4
Jet	0			
Turboprop	1			
Prop	3			
Helicopter	6			
Mixed/Undetermined	3			