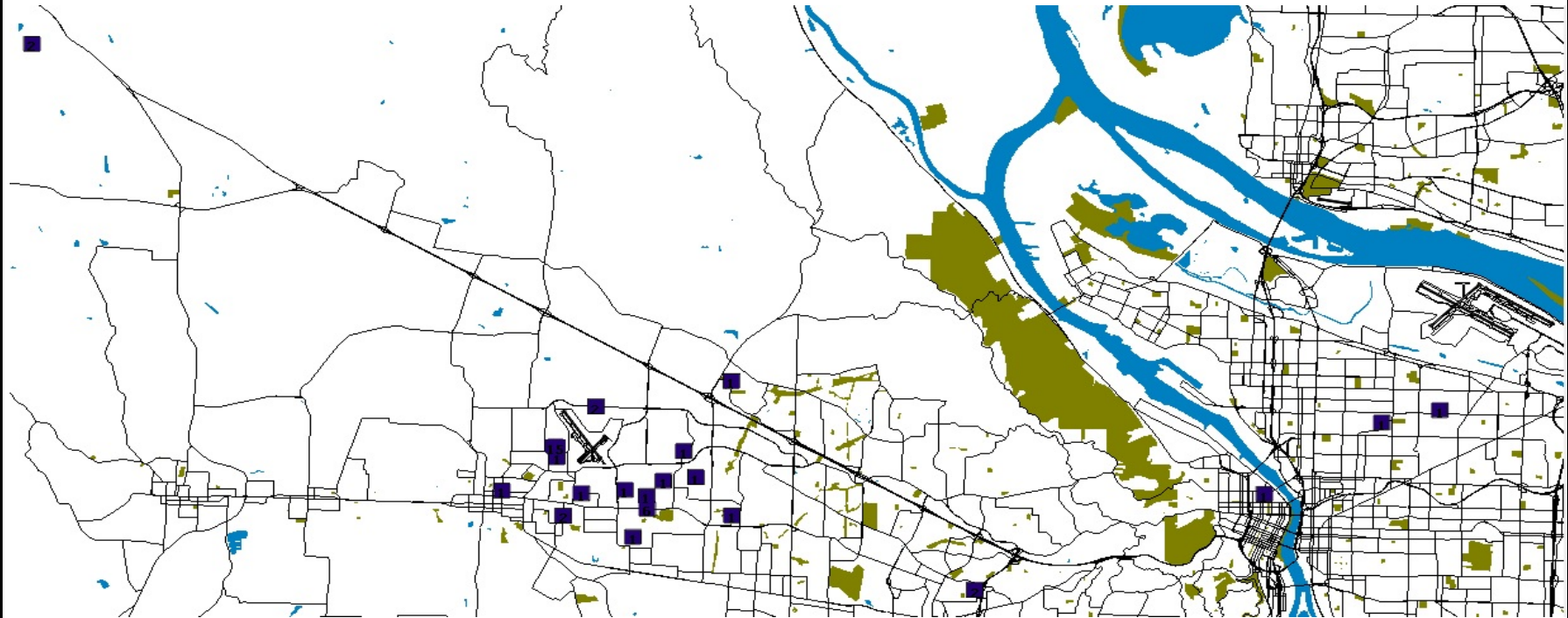
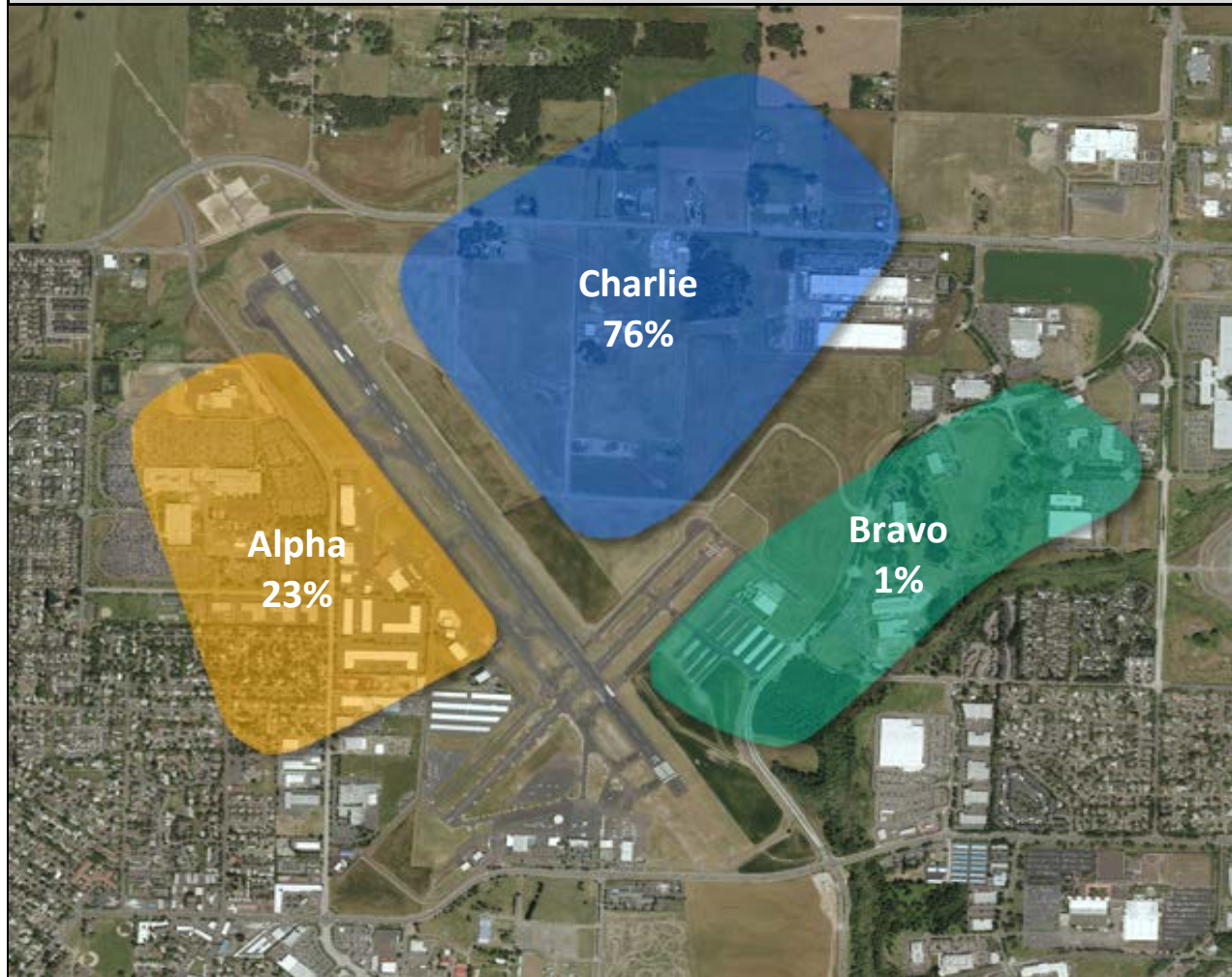


Q3 - 2014 HIO NOISE COMPLAINTS

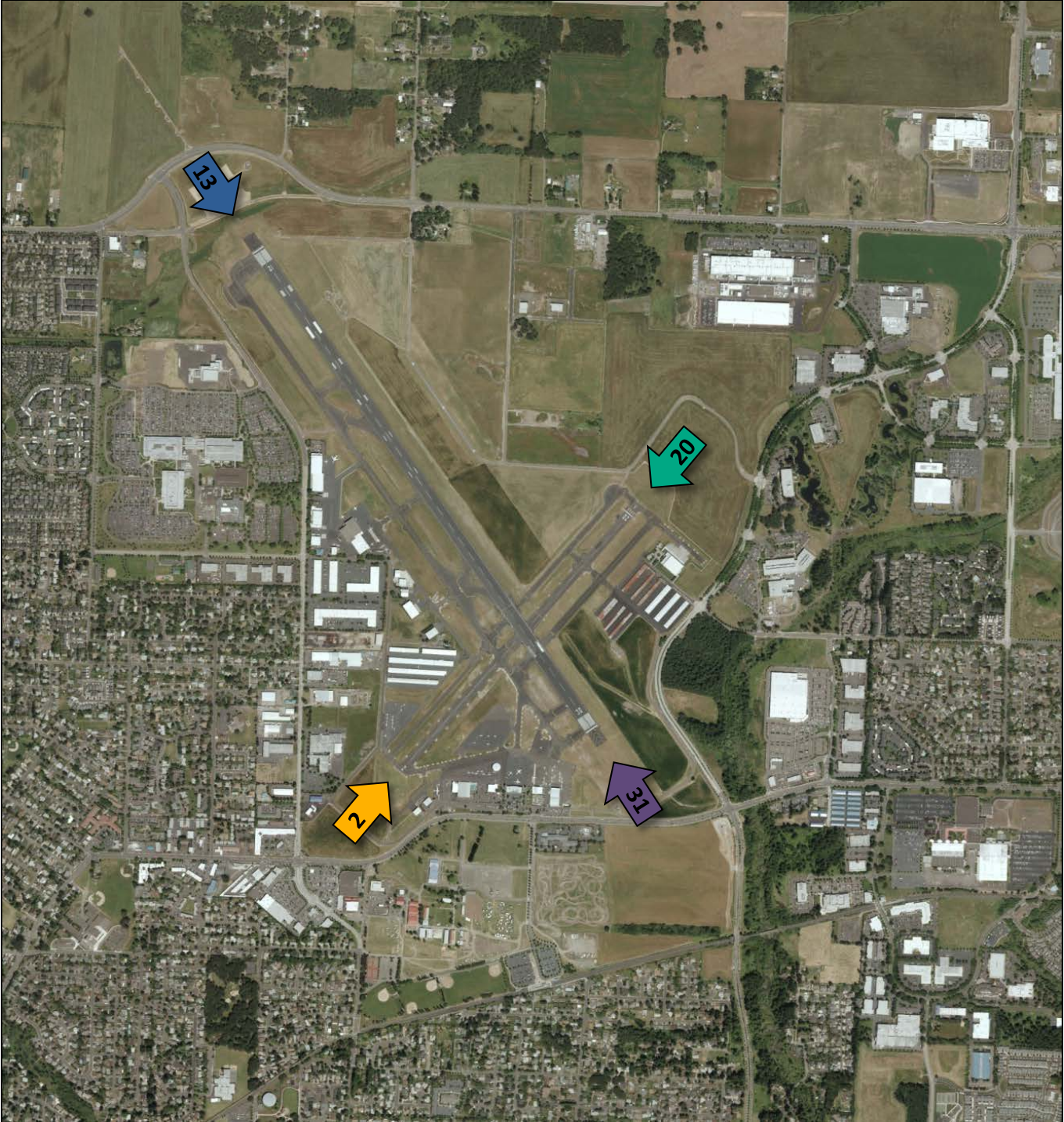


HILLSBORO HELICOPTER PATTERN UTILIZATION - Q3, 2014

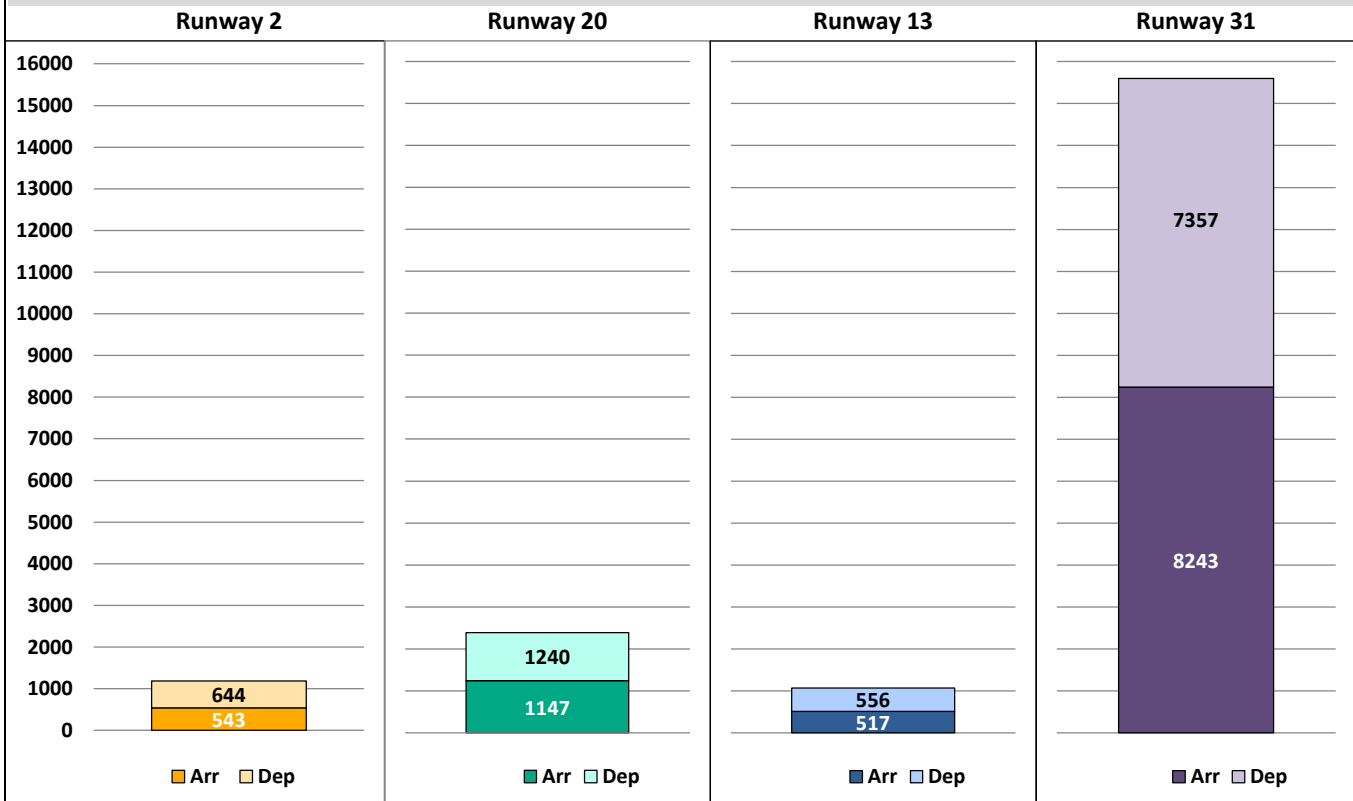


Month	Alpha		Bravo		Charlie		Golf		Total
	Count	Percent	Count	Percent	Count	Percent	Count	Percent	
Jan	464	10%	148	3%	3940	86%	36	0%	4588
Feb	381	9%	198	5%	3465	86%	0	0%	4044
Mar	871	12%	367	5%	6011	83%	0	0%	7249
Q1	1716	11%	713	4%	13416	84%	36	0%	15881
Apr	544	6%	307	4%	7631	90%	0	0%	8482
May	613	7%	109	1%	8686	92%	0	0%	9408
Jun	318	5%	80	1%	6583	94%	0	0%	6981
Q2	1475	6%	496	2%	22900	92%	0	0%	24871
Jul	241	4%	66	1%	5147	94%	0	0%	5454
Aug	2061	35%	76	1%	3790	64%	0	0%	5927
Sep	1532	29%	58	1%	3614	69%	0	0%	5204
Q3	3834	23%	200	1%	12551	76%	0	0%	16585
Oct									
Nov									
Dec									
Q4									
YTD	7025	12%	1409	2%	48867	85%	36	0%	57337

HILLSBORO AIRPORT RUNWAY LAYOUT



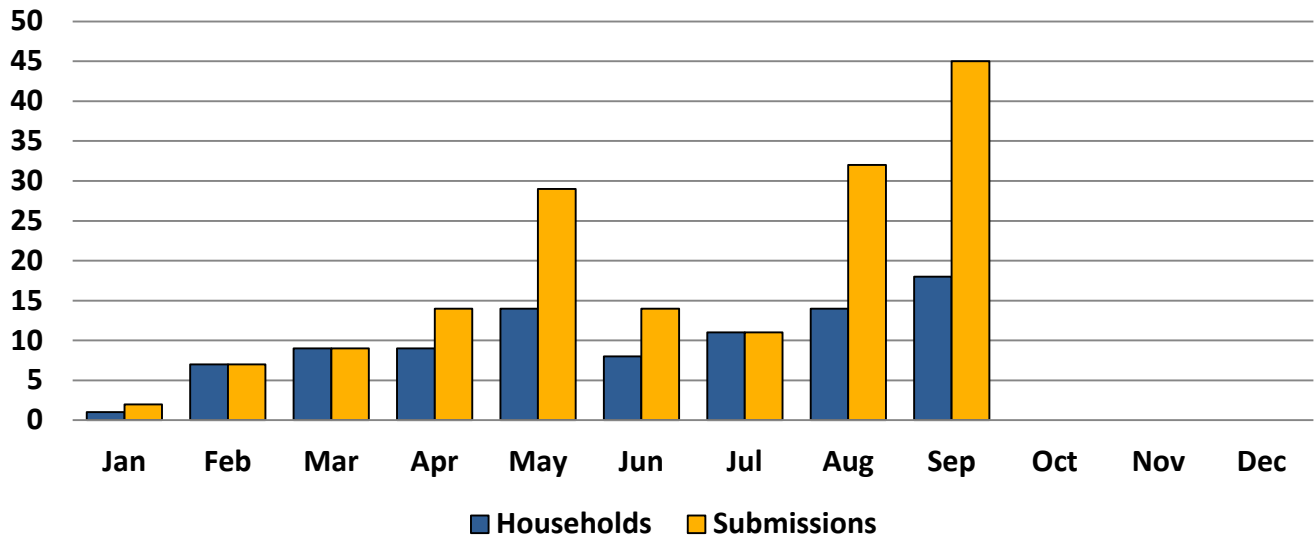
Combined Runway Utilization, Q3 - 2014



		Jan	Feb	Mar	Q1	Apr	May	Jun	Q2	Jul	Aug	Sep	Q3	Oct	Nov	Dec	Q4	YTD
Runway 2	Arr	276	374	170	820	241	200	94	535	130	97	316	543					1898
	Dep	195	344	156	695	247	205	104	556	139	125	380	644					1895
	Total	471	718	326	1515	488	405	198	1091	269	222	696	1187					3793
	Percent	12%	22%	7%	12%	9%	6%	3%	6%	4%	3%	10%	6%					7%
Runway 20	Arr	214	147	332	693	563	706	662	1931	439	362	439	1240					3864
	Dep	222	192	390	804	508	652	626	1786	411	355	381	1147					3737
	Total	436	339	722	1497	1071	1358	1288	3717	850	717	820	2387					7601
	Percent	11%	10%	15%	12%	19%	20%	21%	20%	13%	10%	12%	12%					15%
Runway 13	Arr	328	332	384	1044	340	276	176	792	112	111	294	517					2353
	Dep	260	300	344	904	340	271	174	785	121	122	313	556					2245
	Total	588	632	728	1948	680	547	350	1577	233	233	607	1073					4598
	Percent	15%	19%	15%	16%	12%	8%	6%	8%	4%	3%	9%	5%					9%
Runway 31	Arr	879	606	1219	2704	1821	2426	2289	6536	2750	3109	2384	8243					17483
	Dep	1477	1039	1971	4487	1594	2176	2030	5800	2386	2835	2136	7357					17644
	Total	2356	1645	3190	7191	3415	4602	4319	12336	5136	5944	4520	15600					35127
	Percent	61%	49%	64%	59%	60%	67%	70%	66%	79%	84%	68%	77%					69%
All Runways	Arr	1697	1459	2105	5261	2965	3608	3221	9794	3431	3679	3433	10543					25598
	Dep	2154	1875	2861	6890	2689	3304	2934	8927	3057	3437	3210	9704					25521
	Total	3851	3334	4966	12151	5654	6912	6155	18721	6488	7116	6643	20247					51119

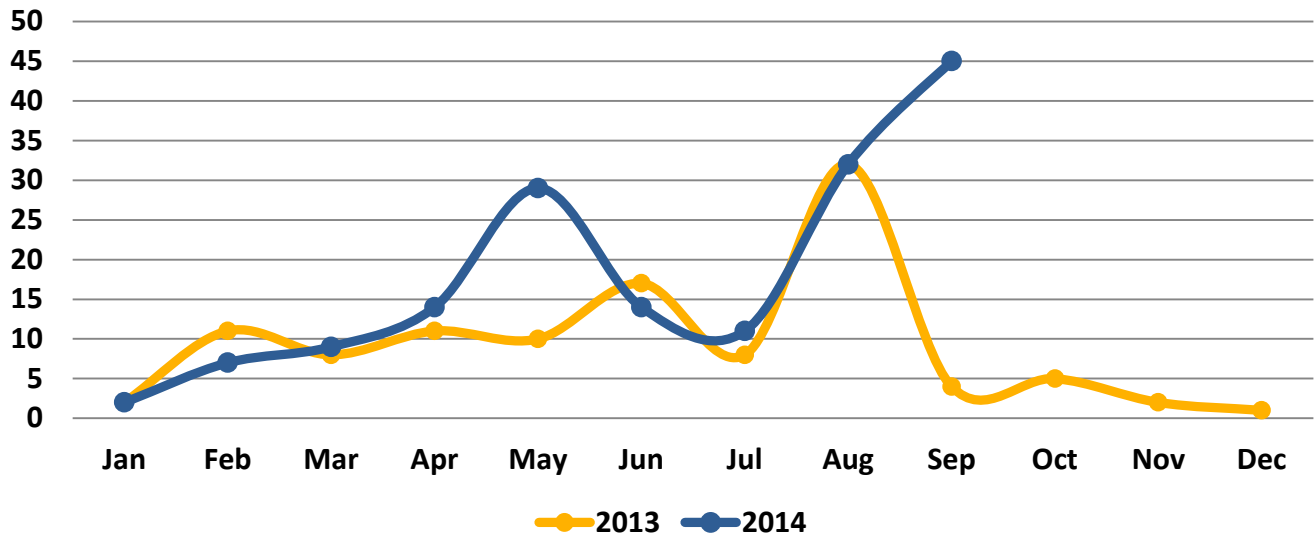
Note: There are two changes effective April 2014: 1) Runway usage data is compiled from a multilateration flight tracking system rather than FAA Radar due to a change in FAA policy. 2) Counts now reflect touch-and-go flight operations with each one counted as one arrival and one departure.

HIO SUBMISSIONS TO HOUSEHOLD COMPARISON



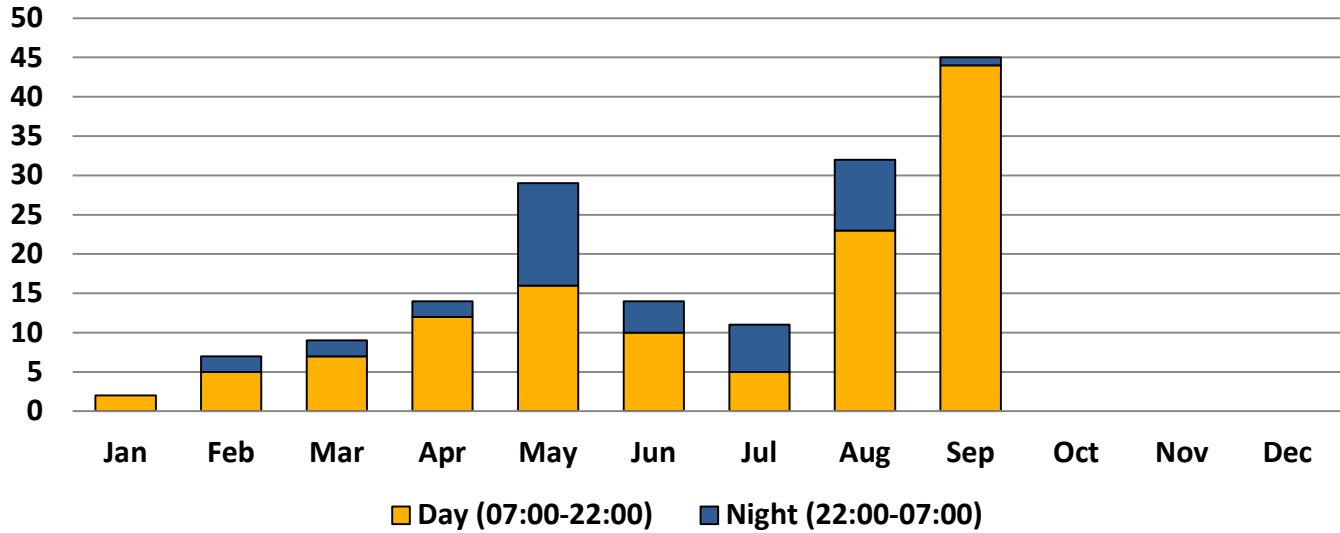
	Jan	Feb	Mar	Apr	May	Jun	Jul	Aug	Sep	Oct	Nov	Dec
Households	1	7	9	9	14	8	11	14	18			
Submissions	2	7	9	14	29	14	11	32	45			

HIO ANNUAL SUBMISSIONS COMPARISON - YEAR TO DATE



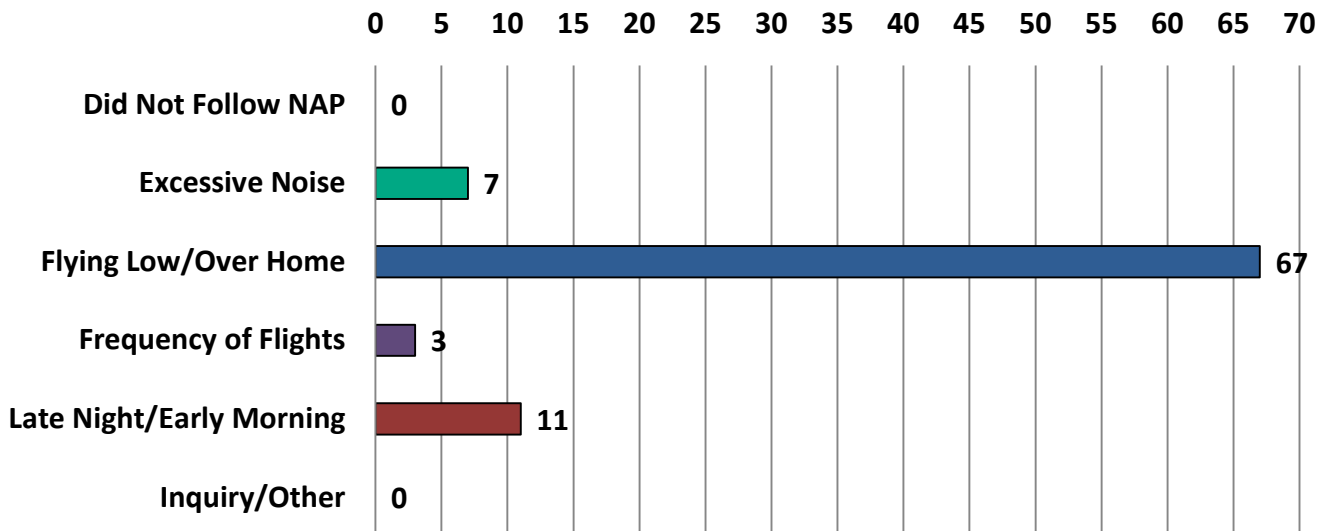
	Jan	Feb	Mar	Apr	May	Jun	Jul	Aug	Sep	Oct	Nov	Dec
2013	2	11	8	11	10	17	8	32	4	5	2	1
2014	2	7	9	14	29	14	11	32	45			

HIO SUBMISSIONS BY TIME OF DAY



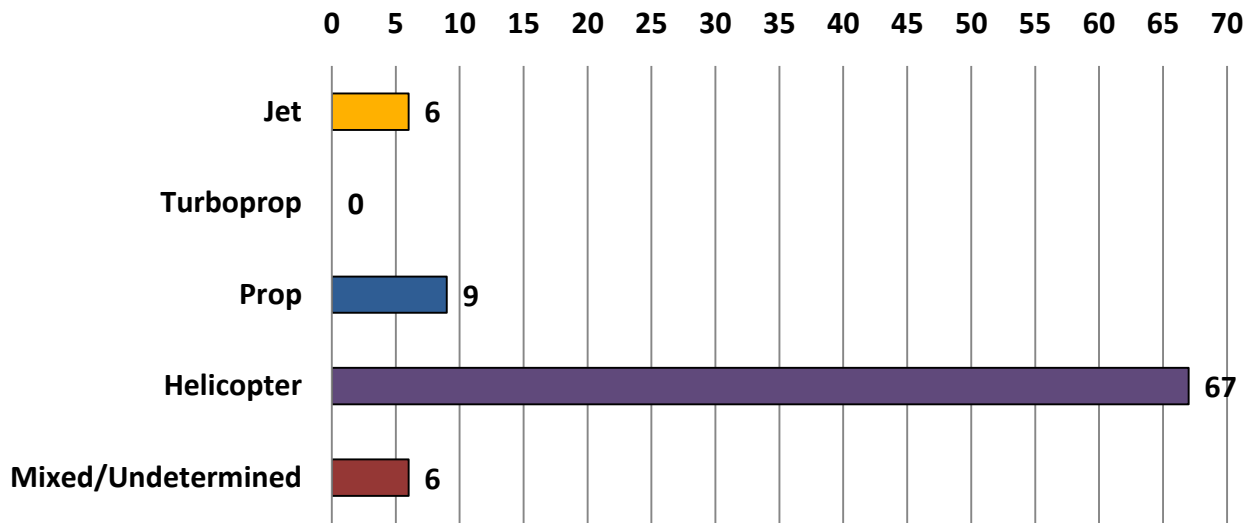
	Jan	Feb	Mar	Apr	May	Jun	Jul	Aug	Sep	Oct	Nov	Dec
Day (07:00-22:00)	2	5	7	12	16	10	5	23	44			
Night (22:00-07:00)	0	2	2	2	13	4	6	9	1			

HIO SUBMISSIONS BY MAIN CONCERN Q3 - 2014



	Q1	Q2	Q3	Q4
Did Not Follow NAP	0	0	0	0
Excessive Noise	6	18	7	0
Flying Low/Over Home	6	18	67	0
Frequency of Flights	2	15	3	0
Late Night/Early Morning	4	4	11	0
Inquiry/Other	0	2	0	0

HIO SUBMISSIONS BY AIRCRAFT CATEGORY Q3 - 2014



	Q1	Q2	Q3	Q4
Jet	2	2	6	
Turboprop	3	0	0	
Prop	5	11	9	
Helicopter	6	18	67	
Mixed/Undetermined	2	26	6	