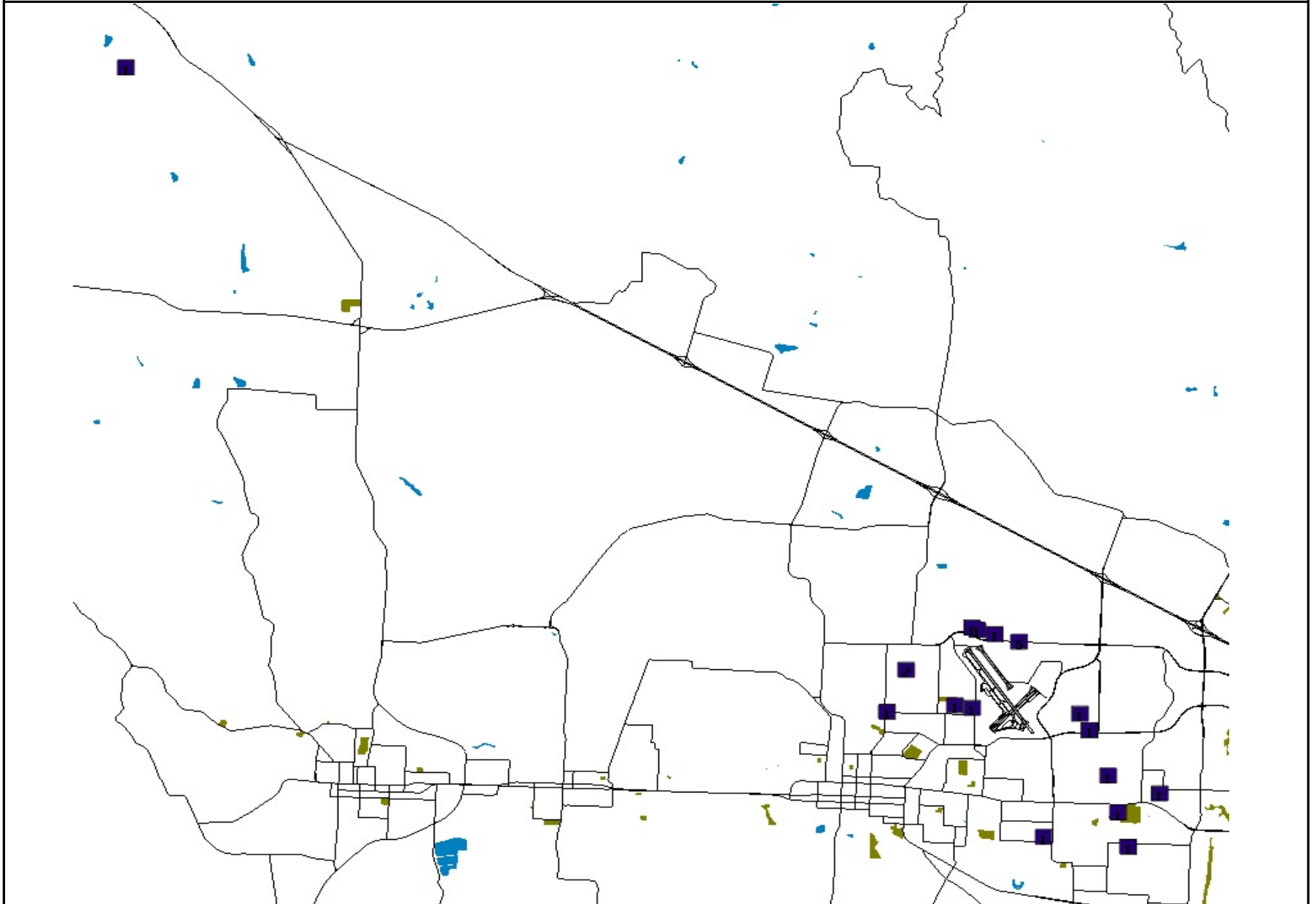
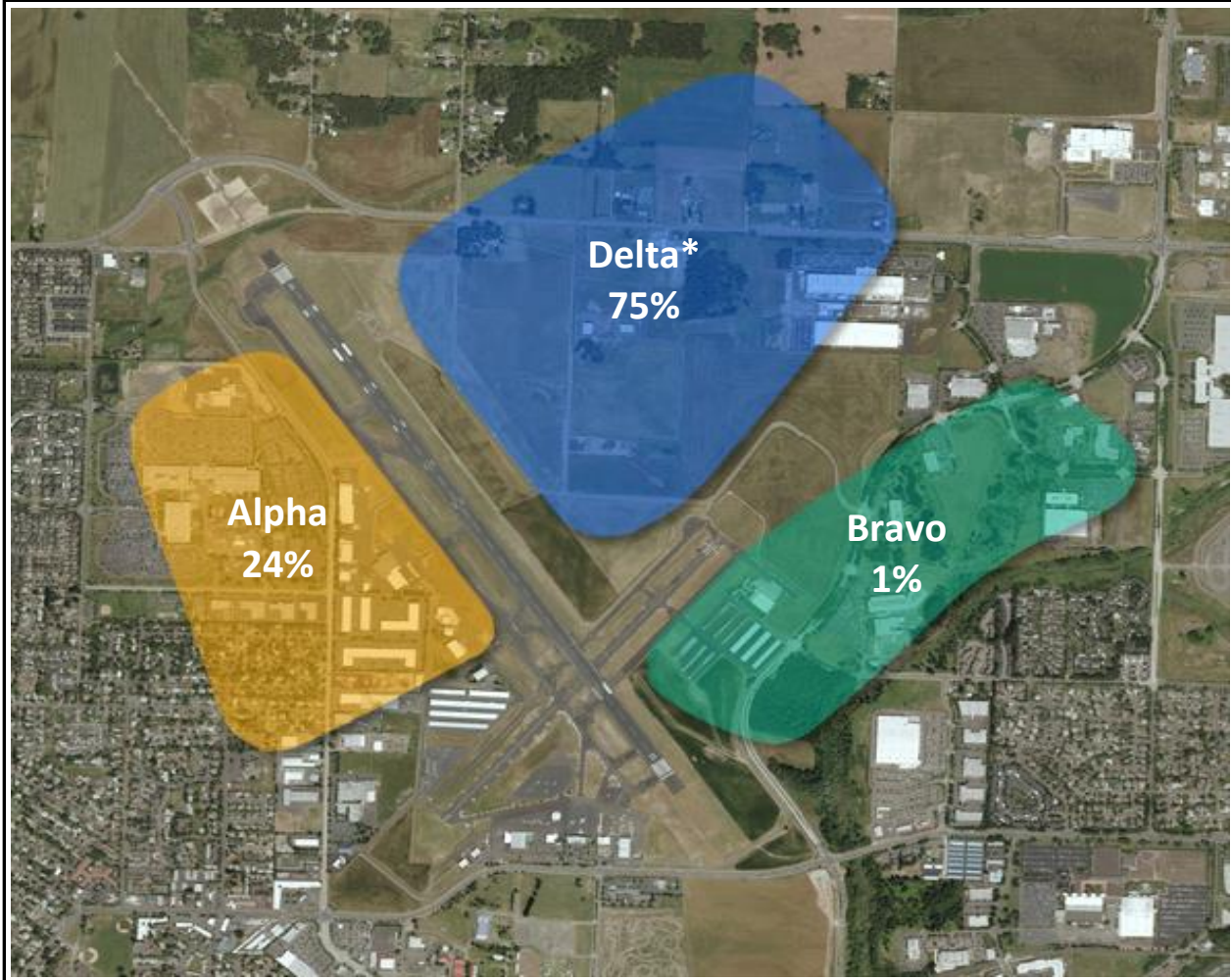


Q3 - 2015 HIO NOISE COMPLAINT LOCATIONS



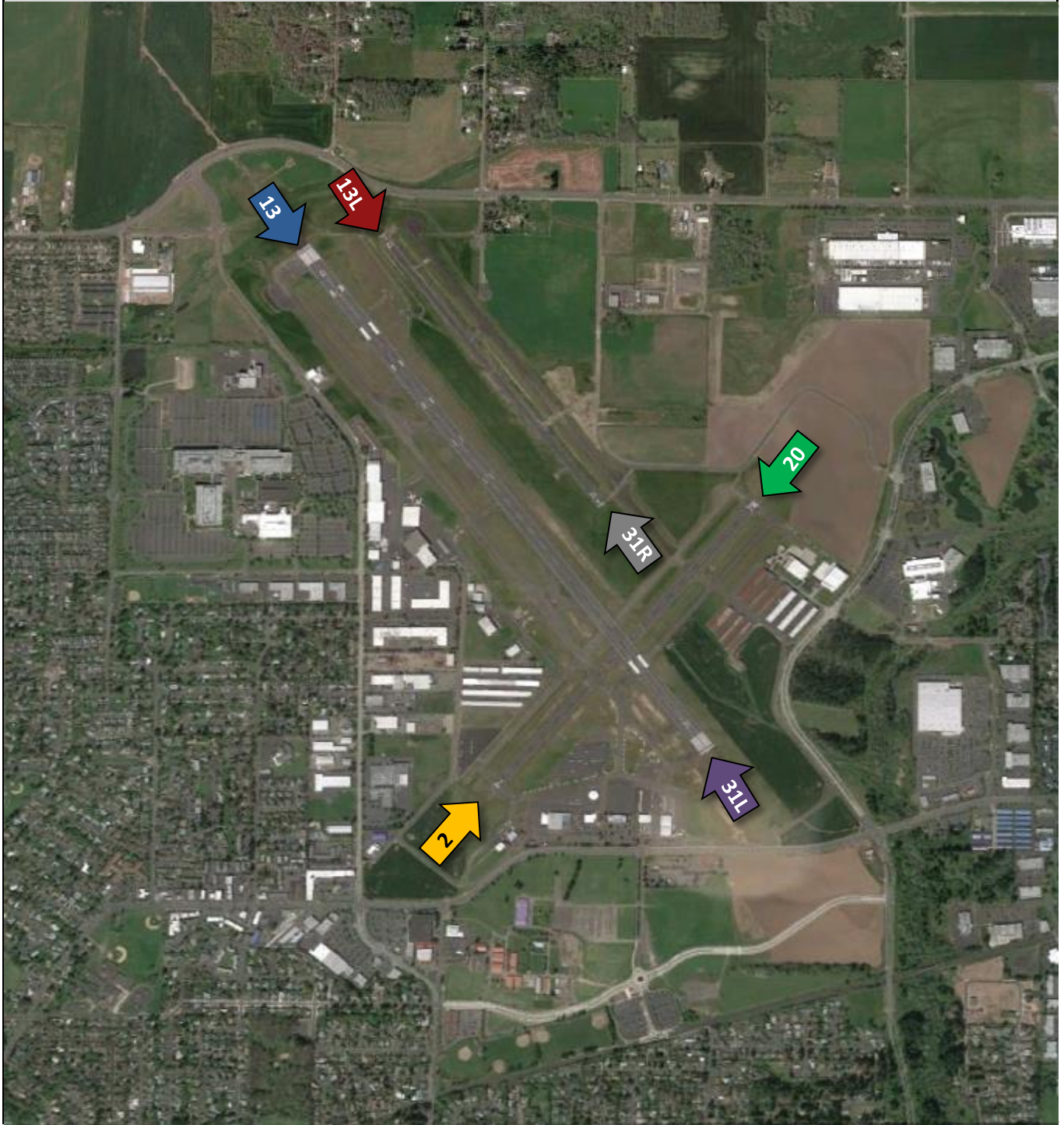
HILLSBORO HELICOPTER PATTERN UTILIZATION - Q3, 2015



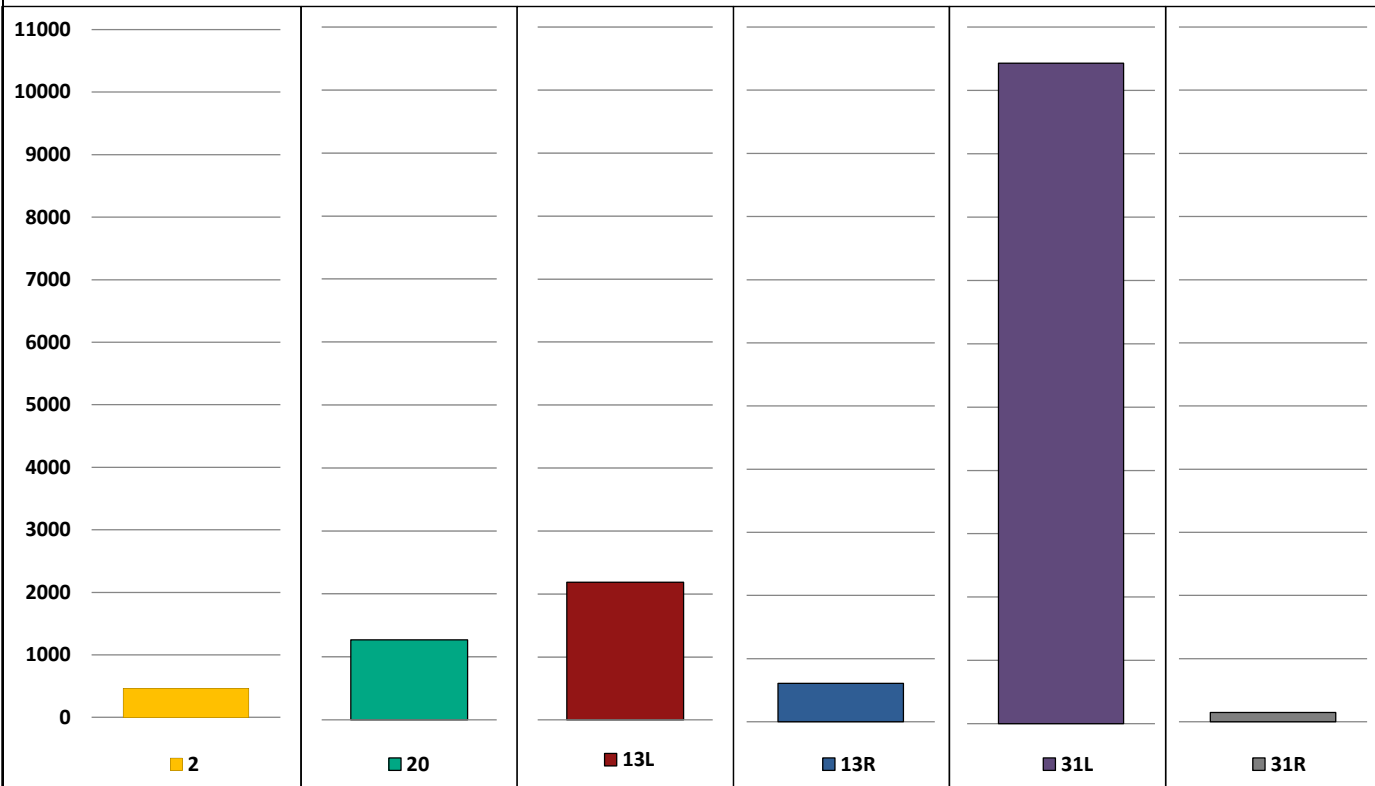
Month	Alpha		Bravo		Delta*		Total
	Count	Percent	Count	Percent	Count	Percent	
Jan	1072	27%	104	3%	2818	71%	3994
Feb	1505	30%	103	2%	3342	68%	4950
Mar	2018	37%	108	2%	3368	61%	5494
Q1	4595	32%	315	2%	9528	66%	14438
Apr	2266	44%	64	1%	2868	55%	5198
May	814	17%	5	0%	3915	83%	4734
Jun	659	14%	5	0%	4117	86%	4781
Q2	3739	25%	74	1%	10900	74%	14713
Jul	1273	26%	45	1%	3622	73%	4940
Aug	1260	24%	42	1%	3926	75%	5228
Sep	709	20%	44	1%	2843	79%	3596
Q3	3242	24%	131	1%	10391	75%	13764
Oct							0
Nov							0
Dec							0
Q4	0		0		0		0
YTD	11576	27%	520	1%	30819	72%	42915

* Charlie pattern was renamed Delta with the opening of runway 13L / 31R on 4/30/15

HILLSBORO AIRPORT RUNWAY LAYOUT



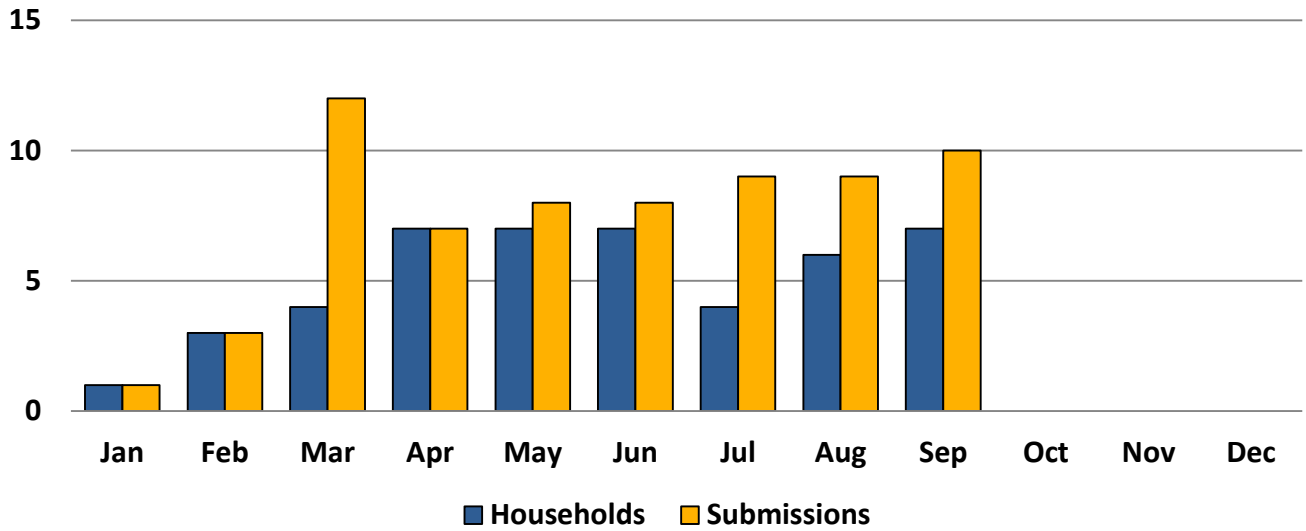
Combined Runway Utilization, Q3 - 2015



		Jan	Feb	Mar	Q1	Apr	May	Jun	Q2	Jul	Aug	Sep	Q3	Oct	Nov	Dec	Q4	YTD
2	Ops Count	156	600	175	931	296	325	324	945	136	94	237	467				0	2343
	Percentage	4%	15%	4%	7%	6%	6%	5%	6%	3%	2%	4%	3%					5%
20	Ops Count	387	387	770	1544	447	311	291	1049	392	493	387	1272				0	3865
	Percentage	10%	10%	16%	12%	9%	6%	5%	6%	10%	9%	7%	8%					9%
13L	Ops Count	0	0	0	0	0	906	2769	3675	815	853	520	2188				0	5863
	Percentage	0	0	0	0%	0%	17%	45%	22%	20%	16%	9%	14%					13%
13R	Ops Count	523	538	785	1846	496	214	127	837	43	194	374	611				0	3294
	Percentage	13%	14%	16%	14%	10%	4%	2%	5%	1%	4%	6%	4%					7%
31L	Ops Count	2896	2419	3227	8542	3865	3632	2504	10001	2609	3636	4186	10431				0	28974
	Percentage	73%	61%	65%	66%	76%	67%	41%	60%	65%	68%	72%	69%					65%
31R	Ops Count	0	0	0	0	0	41	109	150	44	94	103	241				0	391
	Percentage	0	0	0	0%	0%	1%	2%	1%	0%	2%	2%	2%					1%
All	Total	3962	3944	4957	12863	5104	5429	6124	16657	4039	5364	5807	15210	0	0	0	0	44730

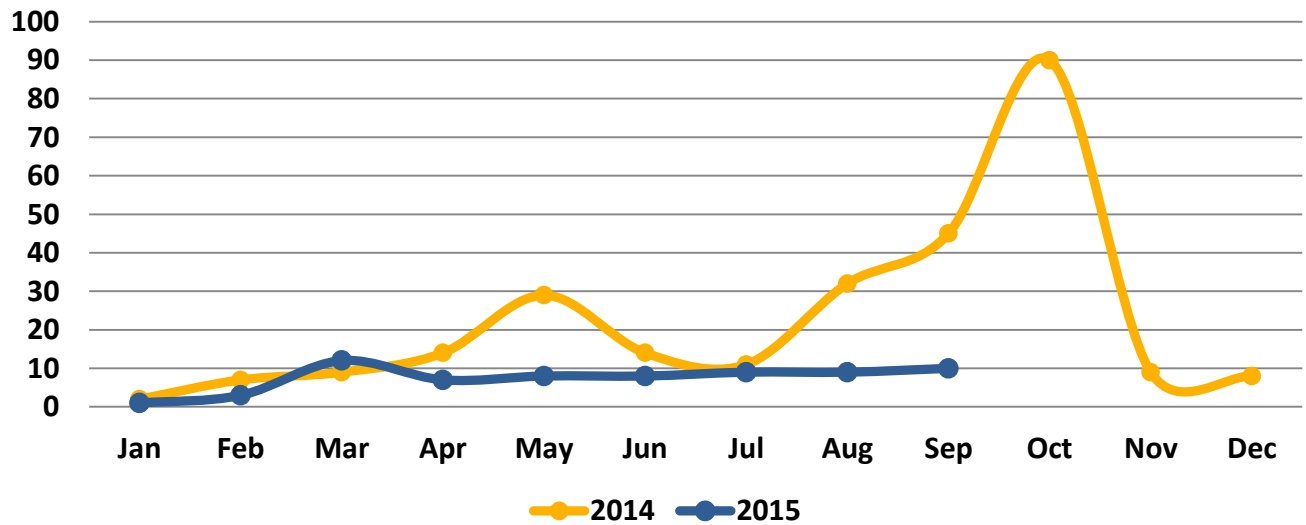
Notes: 1) Runway 13L / 31R became operational on April 30, 2015. 2) Counts reflect total operations, divide in half to estimate arrivals and departures. 3) Relatively short distance between the parallel runways limits ability to accurately separate their operations counts.

HIO SUBMISSIONS TO HOUSEHOLD COMPARISON



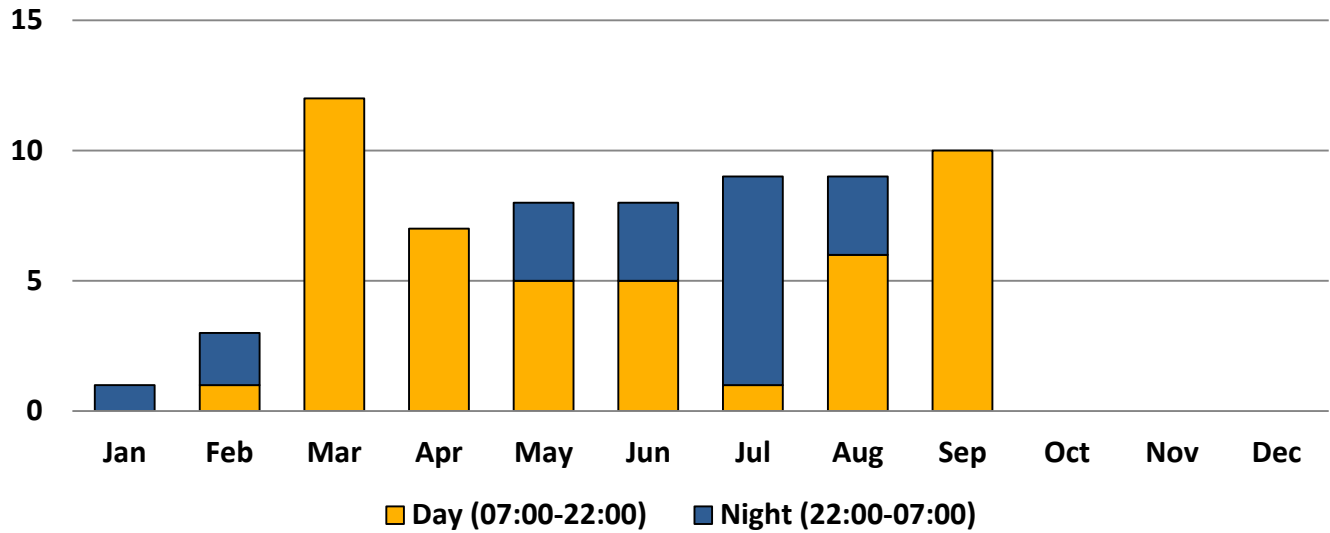
	Jan	Feb	Mar	Apr	May	Jun	Jul	Aug	Sep	Oct	Nov	Dec
Households	1	3	4	7	7	7	4	6	7			
Submissions	1	3	12	7	8	8	9	9	10			

HIO ANNUAL SUBMISSIONS COMPARISON - YEAR TO DATE



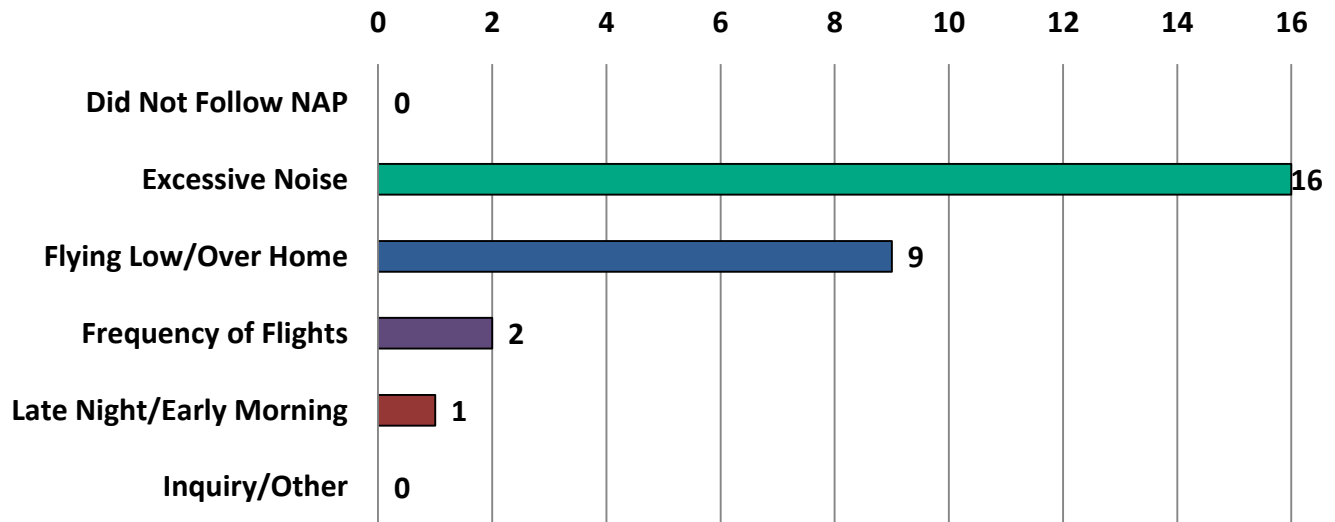
	Jan	Feb	Mar	Apr	May	Jun	Jul	Aug	Sep	Oct	Nov	Dec
2014	2	7	9	14	29	14	11	32	45	90	9	8
2015	1	3	12	7	8	8	9	9	10			

HIO SUBMISSIONS BY TIME OF DAY



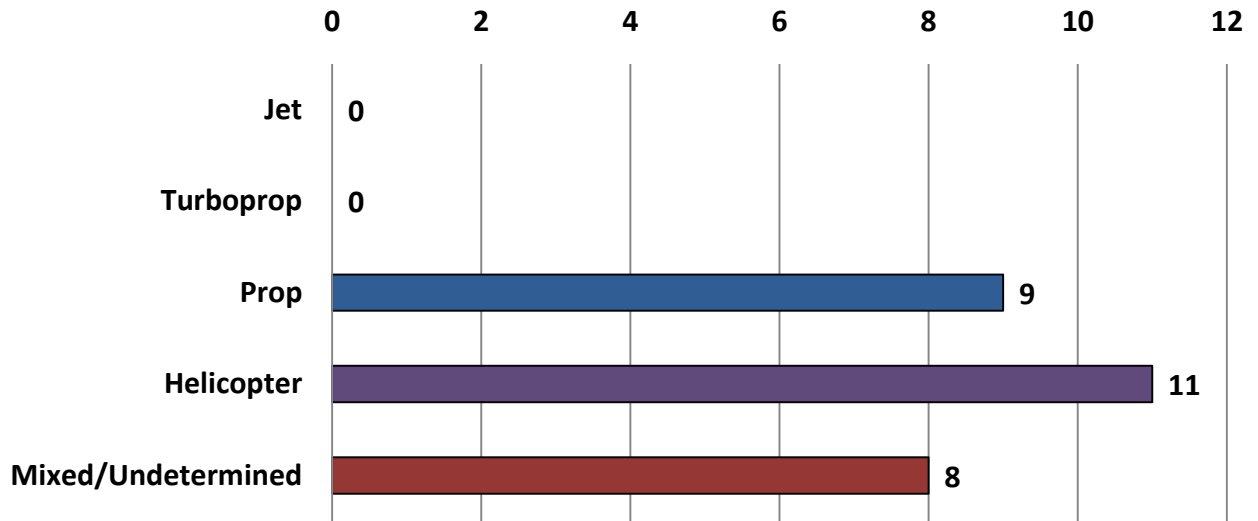
	Jan	Feb	Mar	Apr	May	Jun	Jul	Aug	Sep	Oct	Nov	Dec
Day (07:00-22:00)	0	1	12	7	5	5	1	6	10			
Night (22:00-07:00)	1	2	0	0	3	3	8	3	0			

HIO SUBMISSIONS BY MAIN CONCERN Q3 - 2015



	Q1	Q2	Q3	Q4
Did Not Follow NAP	0	0	0	
Excessive Noise	11	9	16	
Flying Low/Over Home	2	6	9	
Frequency of Flights	3	2	2	
Late Night/Early Morning	0	4	1	
Inquiry/Other	0	2	0	

HIO SUBMISSIONS BY AIRCRAFT CATEGORY Q3 - 2015



	Q1	Q2	Q3	Q4
Jet	0	3	0	
Turboprop	1	3	0	
Prop	3	4	9	
Helicopter	3	6	11	
Mixed/Undetermined	9	7	8	