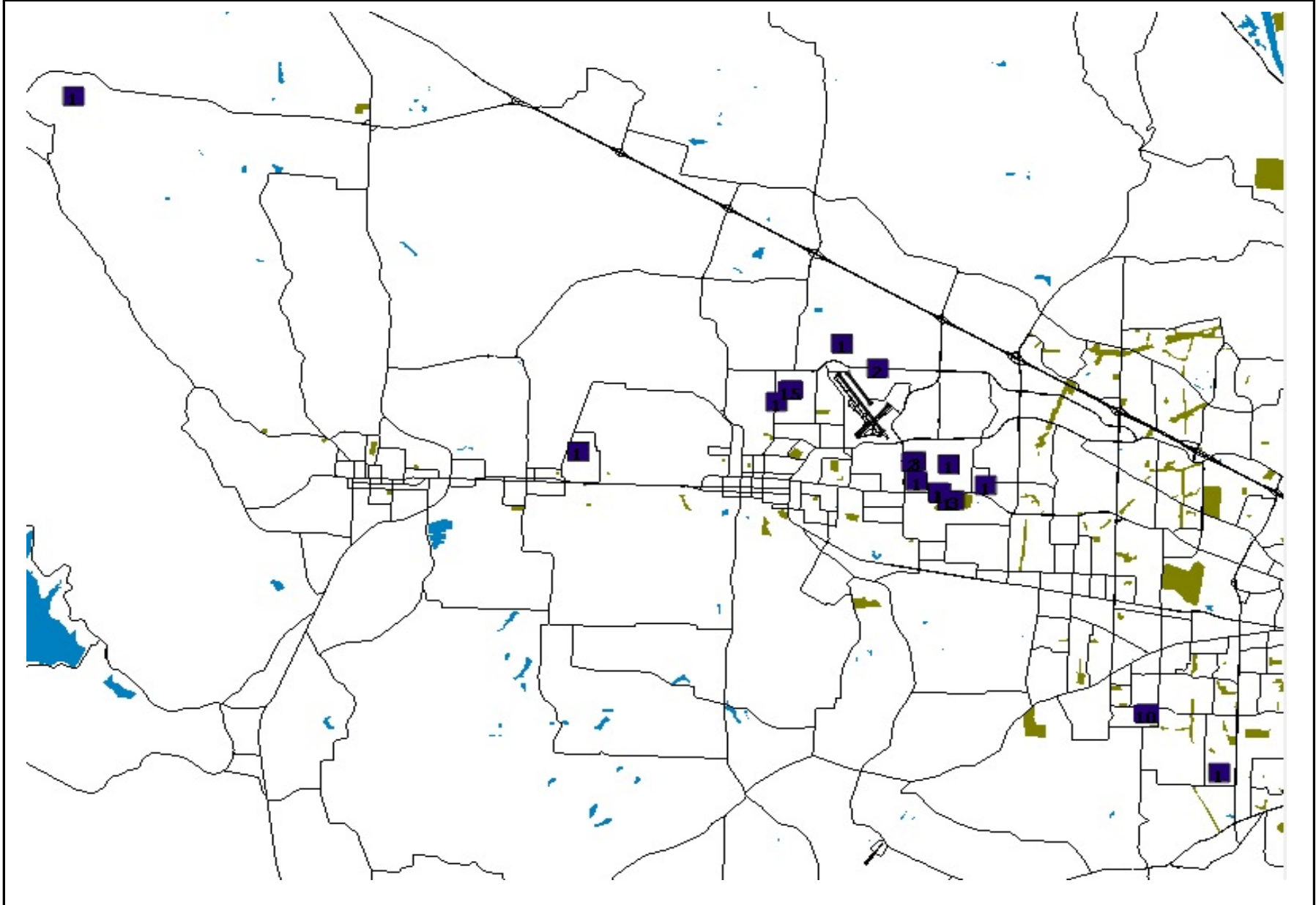
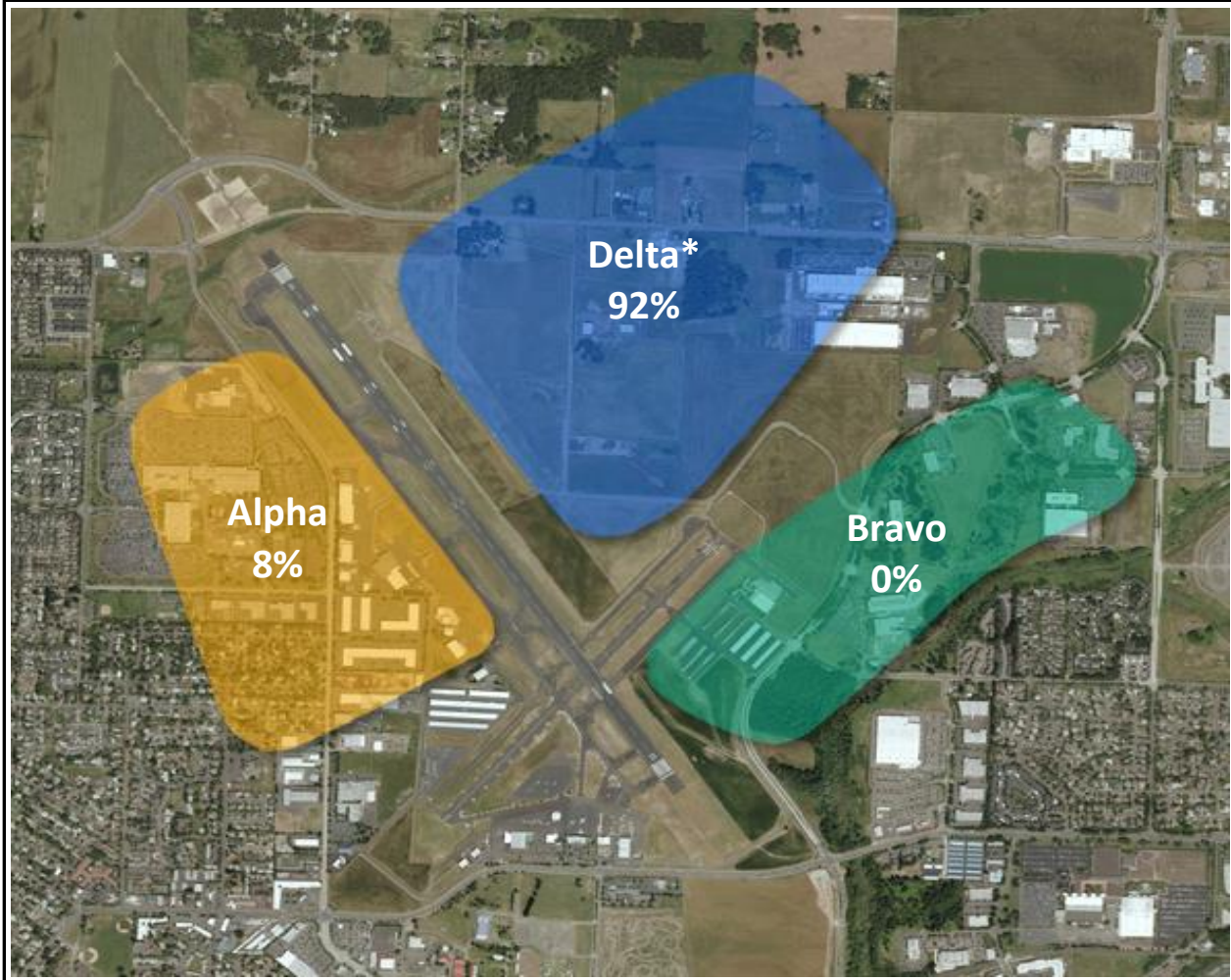


Q3 - 2016 HIO NOISE COMPLAINT LOCATIONS



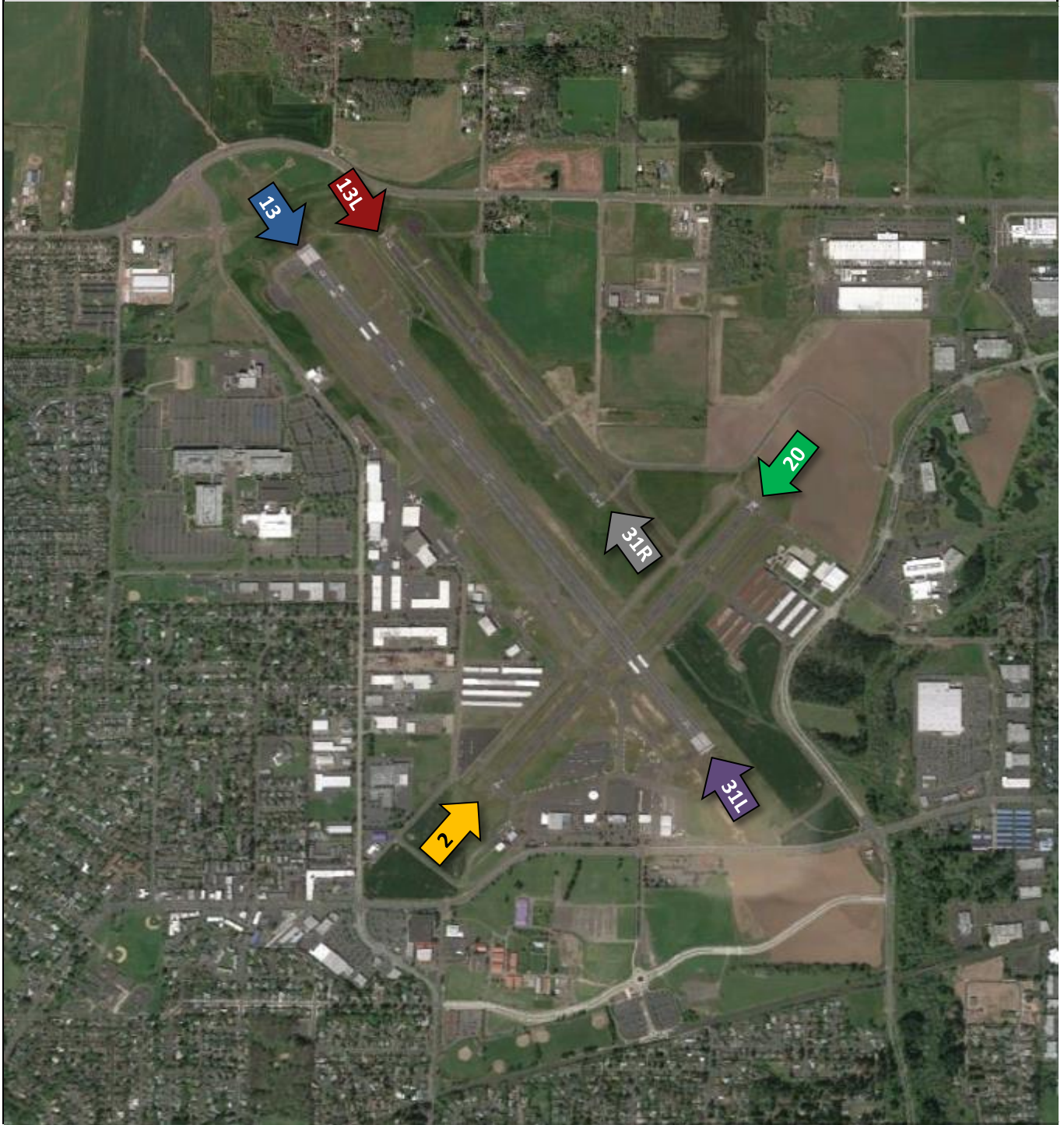
HILLSBORO HELICOPTER PATTERN UTILIZATION - Q3, 2016



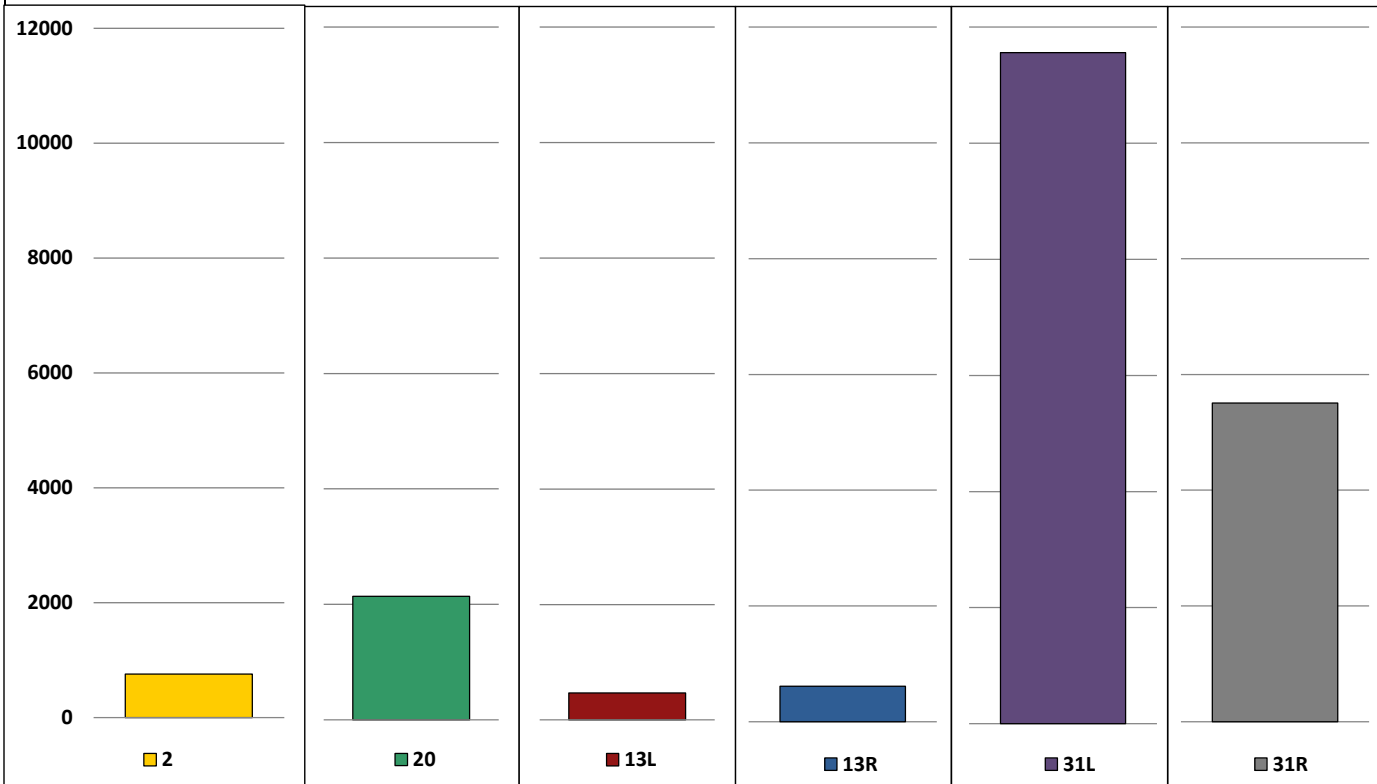
Month	Alpha		Bravo		Delta*		Total
	Count	Percent	Count	Percent	Count	Percent	
Jan	1019	22%	85	2%	3443	76%	4547
Feb	992	24%	113	3%	3046	73%	4151
Mar	683	16%	100	2%	3601	82%	4384
Q1	2694	21%	298	2%	10090	77%	13082
Apr	497	10%	8	0%	4373	90%	4878
May	375	9%	36	1%	3901	90%	4312
Jun	262	7%	17	0%	3432	92%	3711
Q2	1134	9%	61	0%	11706	91%	12901
Jul	367	9%	1	0%	3782	91%	4150
Aug	290	10%	1	0%	2563	90%	2854
Sep	86	4%	1	0%	2210	96%	2297
Q3	743	8%	3	0%	8555	92%	9301
Oct							0
Nov							0
Dec							0
Q4	0		0		0		0
YTD	4571	13%	362	1%	30351	86%	35284

* Charlie pattern was renamed Delta with the opening of runway 13L / 31R on 4/30/15

HILLSBORO AIRPORT RUNWAY LAYOUT



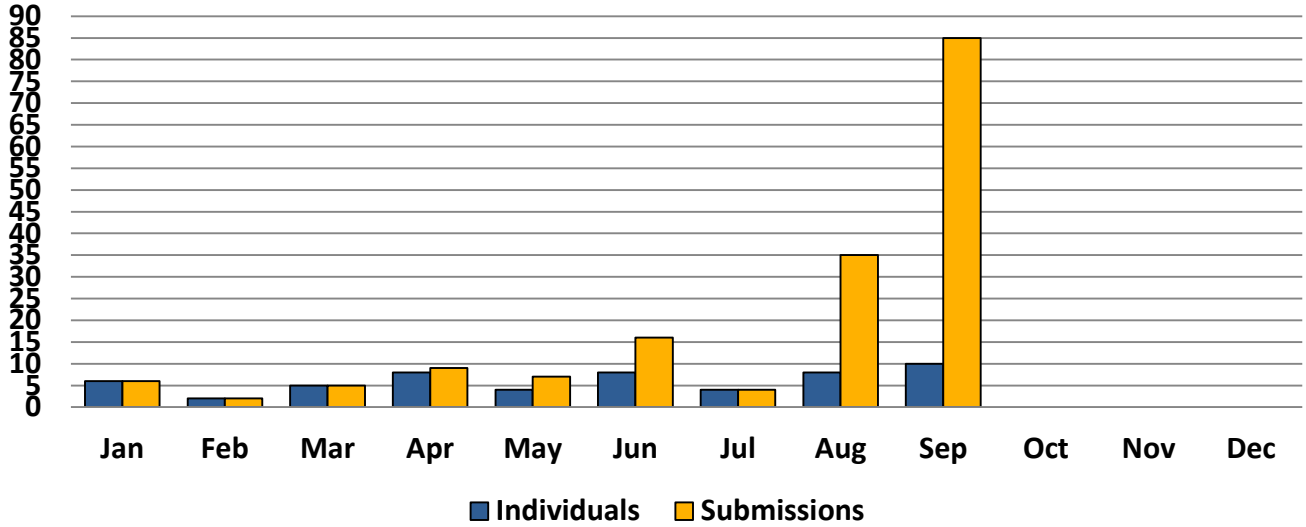
Combined Runway Utilization, Q3 - 2016



		Jan	Feb	Mar	Q1	Apr	May	Jun	Q2	Jul	Aug	Sep	Q3	Oct	Nov	Dec	Q4	YTD
2	Ops Count	258	179	270	707	282	182	103	567	186	248	320	754				0	2028
	Percentage	6%	5%	6%	6%	4%	3%	2%	3%	3%	3%	5%	4%					4%
20	Ops Count	602	550	731	1883	787	1061	908	2756	926	589	625	2140				0	6779
	Percentage	15%	15%	15%	15%	12%	15%	17%	15%	14%	7%	10%	10%					13%
13L	Ops Count	238	144	254	636	230	146	126	502	171	133	165	469				0	1607
	Percentage	6%	4%	5%	5%	4%	2%	2%	3%	2%	2%	3%	2%					3%
13R	Ops Count	646	297	719	1662	329	132	145	606	181	169	263	613				0	2881
	Percentage	16%	8%	15%	13%	5%	2%	3%	3%	3%	2%	4%	3%					5%
31L	Ops Count	1581	1890	1968	5439	3233	3582	2882	9697	3664	4496	3400	11560				0	26696
	Percentage	38%	50%	42%	43%	50%	52%	52%	51%	53%	56%	55%	55%					51%
31R	Ops Count	820	708	787	2315	1553	1828	1327	4708	1729	2362	1415	5506				0	12529
	Percentage	20%	19%	17%	18%	24%	26%	24%	25%	25%	30%	23%	26%					24%
All	Total	4145	3768	4729	12642	6414	6931	5491	18836	6857	7997	6188	21042	0	0	0	0	52520

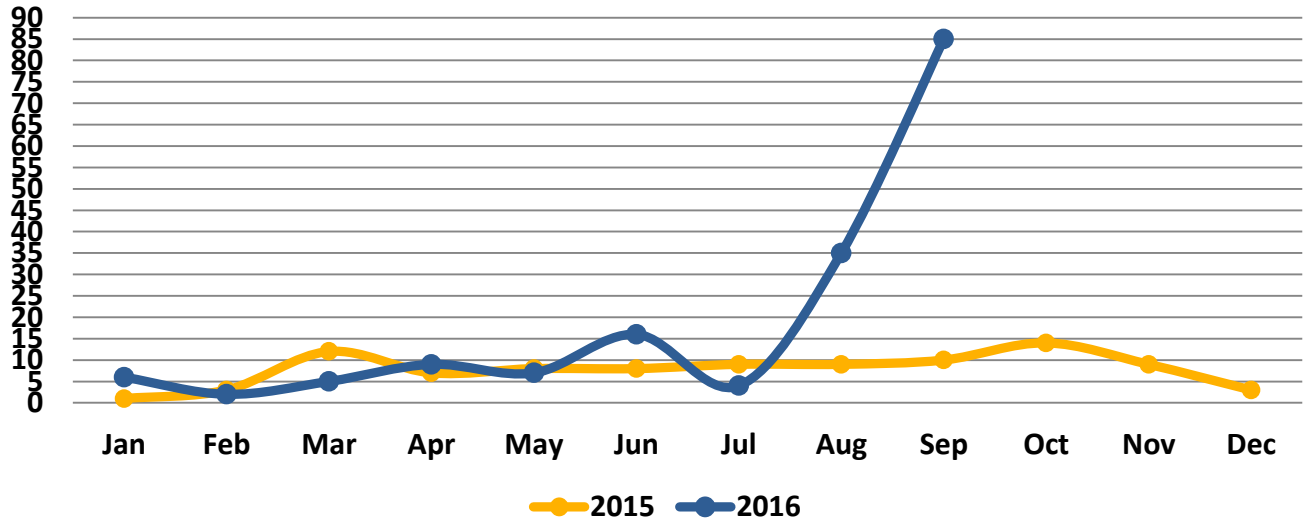
Notes: 1) Runway 13L / 31R became operational on April 30, 2015. 2) Counts reflect total operations, divide in half to estimate arrivals and departures. 3) Relatively short distance between the parallel runways limits ability to accurately separate their operations counts.

HIO INDIVIDUAL TO SUBMISSIONS COMPARISON



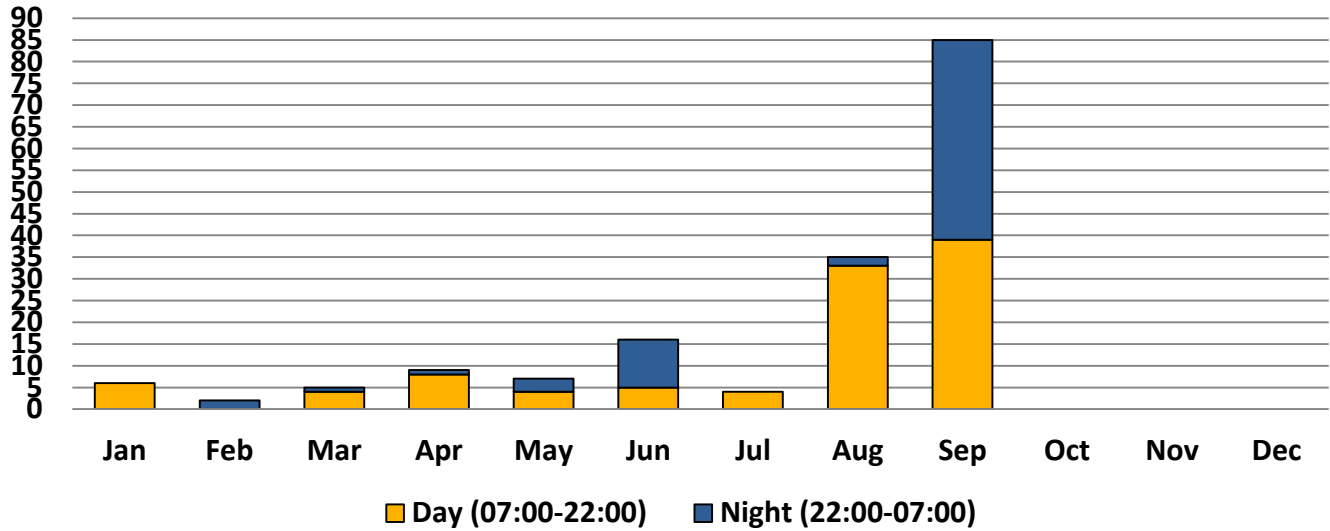
	Jan	Feb	Mar	Apr	May	Jun	Jul	Aug	Sep	Oct	Nov	Dec
Individuals	6	2	5	8	4	8	4	8	10			
Submissions	6	2	5	9	7	16	4	35	85			

HIO ANNUAL SUBMISSIONS COMPARISON - YEAR TO DATE



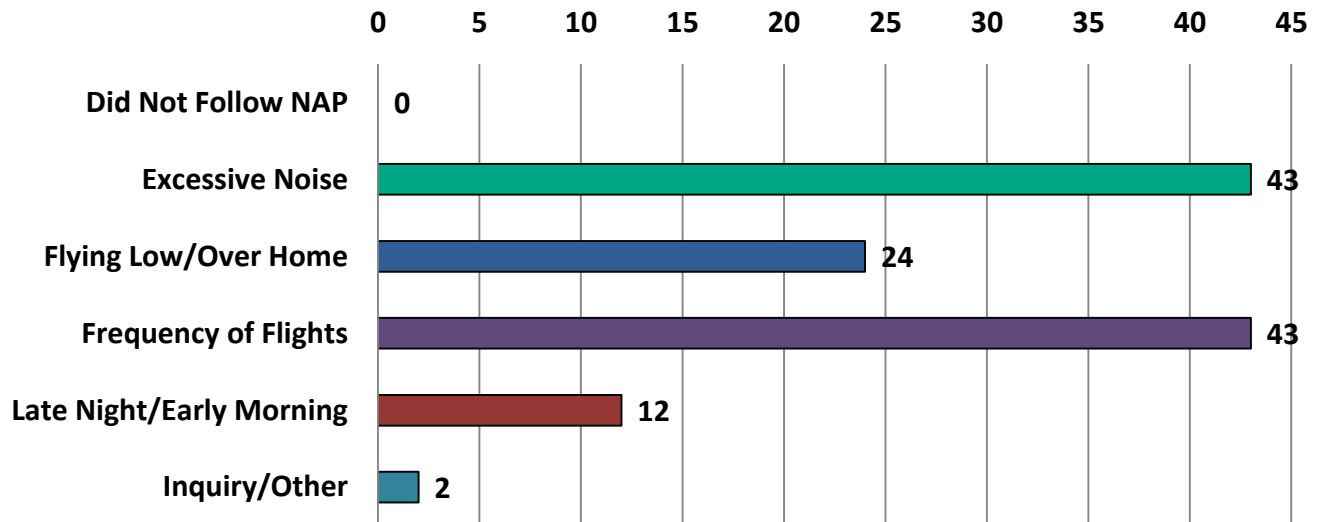
	Jan	Feb	Mar	Apr	May	Jun	Jul	Aug	Sep	Oct	Nov	Dec
2015	1	3	12	7	8	8	9	9	10	14	9	3
2016	6	2	5	9	7	16	4	35	85			

HIO SUBMISSIONS BY TIME OF DAY



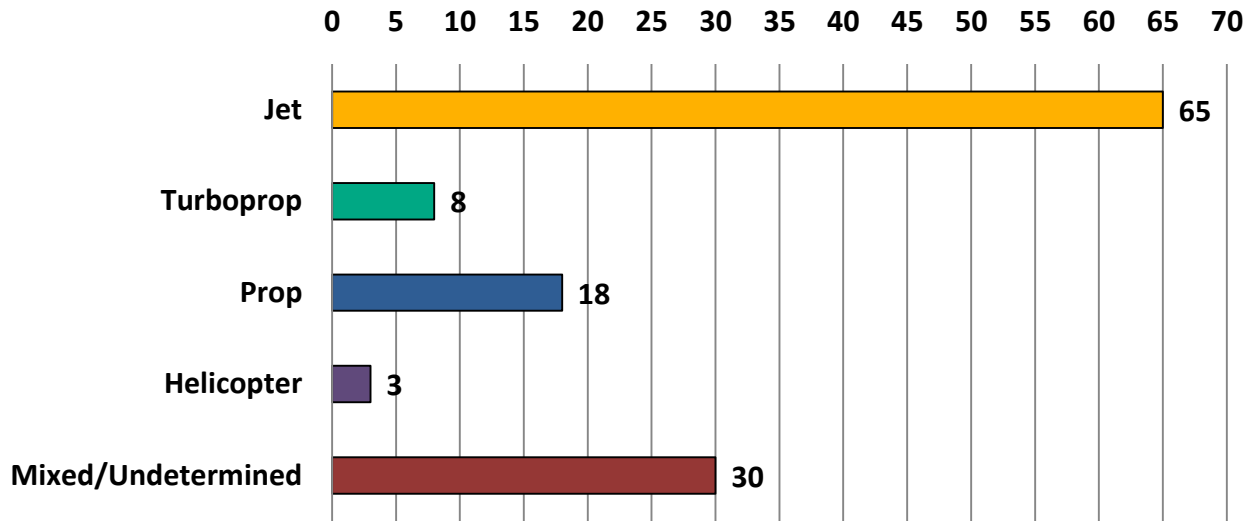
	Jan	Feb	Mar	Apr	May	Jun	Jul	Aug	Sep	Oct	Nov	Dec
Day (07:00-22:00)	6	0	4	8	4	5	4	33	39			
Night (22:00-07:00)	0	2	1	1	3	11	0	2	46			

HIO SUBMISSIONS BY MAIN CONCERN Q3 - 2016



	Q1	Q2	Q3	Q4
Did Not Follow NAP	0	0	0	
Excessive Noise	6	10	43	
Flying Low/Over Home	4	16	24	
Frequency of Flights	1	0	43	
Late Night/Early Morning	2	4	12	
Inquiry/Other	0	2	2	

HIO SUBMISSIONS BY AIRCRAFT CATEGORY Q3 - 2016



	Q1	Q2	Q3	Q4
Jet	0	3	65	
Turboprop	1	1	8	
Prop	3	12	18	
Helicopter	6	11	3	
Mixed/Undetermined	3	5	30	