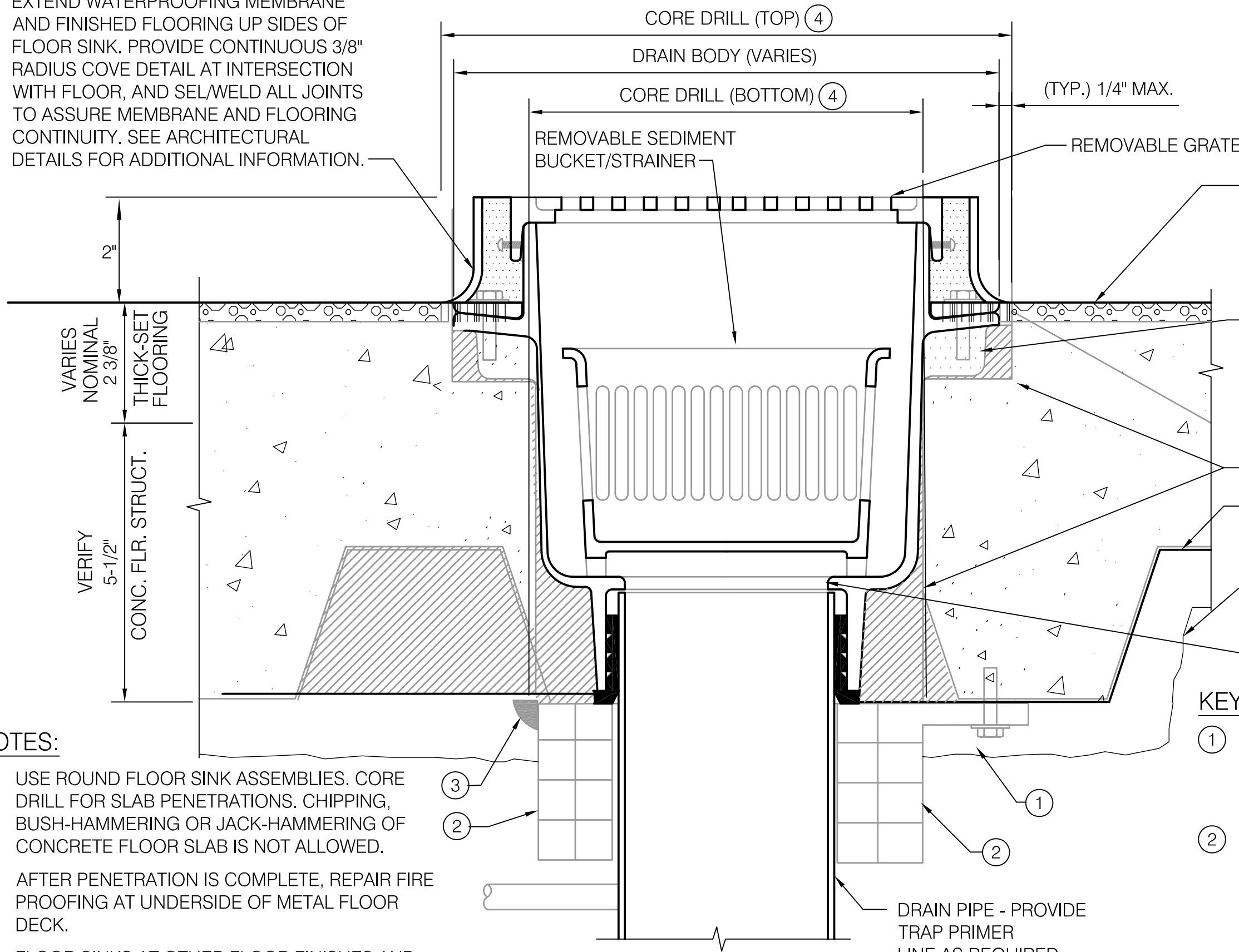


EXTEND WATERPROOFING MEMBRANE AND FINISHED FLOORING UP SIDES OF FLOOR SINK. PROVIDE CONTINUOUS 3/8" RADIUS COVE DETAIL AT INTERSECTION WITH FLOOR, AND SEL/WELD ALL JOINTS TO ASSURE MEMBRANE AND FLOORING CONTINUITY. SEE ARCHITECTURAL DETAILS FOR ADDITIONAL INFORMATION.



(TYP.) 1/4" MAX.

REMOVABLE SEDIMENT BUCKET/STRAINER

REMOVABLE GRATE

EPOXY FLOOR PATCH - COLOR TO MATCH ADJACENT TERRAZZO AT EXPOSED AREAS

DRAIN ADHESIVE/ SEALANT -HYDROMENT ULTRA-SET BY BOSTIK, INC. - BUILD-UP IN 1/4" LIFTS TO FINAL DEPTH

NON-SHRINK GROUT

FLUTED METAL FLOOR DECK W/ SPRAY-ON FIREPROOFING

REPAIR SPRAY-ON FIREPROOFING

FIXED STRAINER

2"

VARIABLE NOMINAL 2 3/8"

THICK-SET FLOORING

VERIFY 5-1/2"

CONC. FLR. STRUCT.

CORE DRILL (TOP) ④

DRAIN BODY (VARIES)

CORE DRILL (BOTTOM) ④

NOTES:

1. USE ROUND FLOOR SINK ASSEMBLIES. CORE DRILL FOR SLAB PENETRATIONS. CHIPPING, BUSH-HAMMERING OR JACK-HAMMERING OF CONCRETE FLOOR SLAB IS NOT ALLOWED.
2. AFTER PENETRATION IS COMPLETE, REPAIR FIRE PROOFING AT UNDERSIDE OF METAL FLOOR DECK.
3. FLOOR SINKS AT OTHER FLOOR FINISHES AND SUBFLOORING SIMILAR
4. FOR USE WITH PVDF PIPE ONLY.
5. FLOOR SINK BODIES WITH SEEPAGE HOLES ARE NOT ALLOWED.

KEY NOTES:

- ① 1/4" DIAMETER BY MINIMUM 1-1/2" LONG EXPANSION BOLT WITH NUTS AND MINIMUM 1-1/4" DIAMETER FENDER WASHER. ALL HARDWARE SHALL BE STAINLESS STEEL.
- ② INTUMESCENT PIPE SLEEVE: 3M ULTRA PPD. SIZE TO MATCH PIPE. INSTALL PER MANUFACTURES RECOMMENDATIONS INSTALL ON A FLAT SURFACE ONLY. USE BOLTED CONNECTION ONLY, INSTALL BOLTS AT ALL BOLT CONNECTION POINTS. SEE SECTION 078400, FIRE STOPPING.
- ③ FILL ANY VOIDS BETWEEN DECK AND INTUMESCENT SLEEVE PROVIDE MINIMUM 1/4" BEAD AROUND THE INTUMESCENT SLEEVE
- ④ CORE DRILL TWO HOLES TO PROVIDE "SEAT" FOR FLOOR SINK BODY

2235 FLOOR SINK RAISED - PVDF PIPE
SCALE: NTS