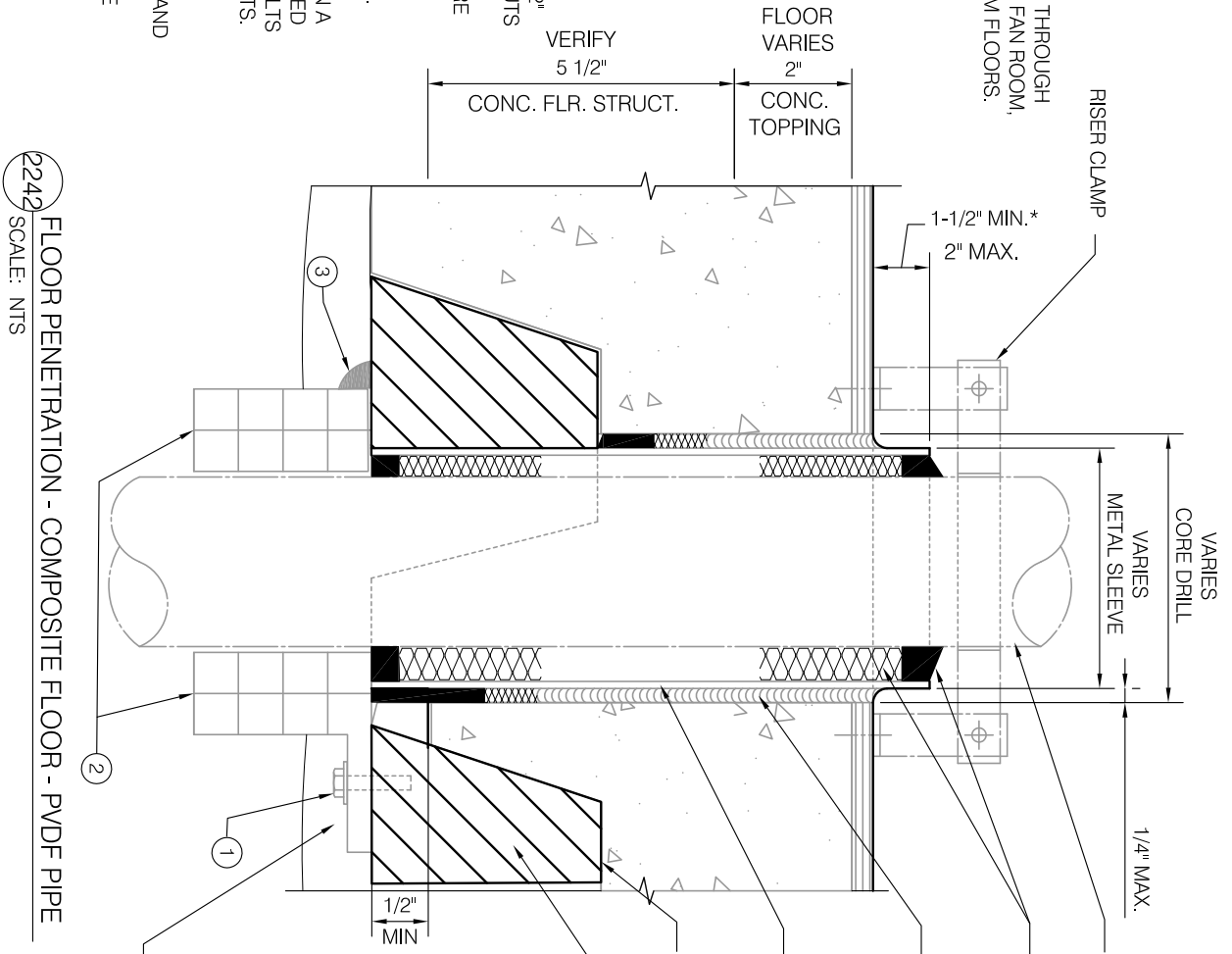


\* EXTEND 2" ABOVE FINISHED FLOOR THROUGH FOOD SERVICE, JANITORIAL ROOM, FAN ROOM, AND MECHANICAL EQUIPMENT ROOM FLOORS.

- KEY NOTES:**
- 1/4" DIAMETER BY MINIMUM 1-1/2" LONG EXPANSION BOLT WITH NUTS AND MINIMUM 1-1/4" DIAMETER FENDER WASHER. ALL HARDWARE SHALL BE STAINLESS STEEL.
  - INTUMESCENT PIPE SLEEVE: 3M ULTRA PPD. SIZE TO MATCH PIPE. INSTALL PER MANUFACTURER'S RECOMMENDATIONS. INSTALL ON A FLAT SURFACE ONLY. USE BOLTED CONNECTION ONLY. INSTALL BOLTS AT ALL BOLT CONNECTION POINTS. SEE SECTION 078400, FIRE STOPPING.
  - FILL ANY VOIDS BETWEEN DECK AND INTUMESCENT SLEEVE PROVIDE MINIMUM 1/4" BEAD AROUND THE INTUMESCENT SLEEVE



2242 FLOOR PENETRATION - COMPOSITE FLOOR - PVDF PIPE  
SCALE: NTS

- NOTES:**
- CORE DRILL FOR ROUND PENETRATIONS AND SAW-CUT FOR SQUARE OR RECTANGULAR PENETRATIONS. CHIPPING, BUSH-HAMMERING OR JACK-HAMMERING OF CONCRETE FLOOR SLAB IS NOT ALLOWED.
  - FOR USE WITH PVDF PIPE ONLY.
  - AFTER PENETRATION IS COMPLETE, REPAIR FIRE PROOFING AT UNDERSIDE OF METAL FLOOR DECK.
- NON-SHRINKING GROUT EXTEND MIN. 4" BEYOND INTUMESCENT PIPE SLEEVE.
  - FLUTED METAL FLOOR DECK W/ SPRAY-ON FIREPROOFING
  - FLOOR PENETRATION SLEEVE-NON-CORROSIVE METAL WITH FULLY WELDED SEAM (S)
  - SLEEVE ADHESIVE/SEALANT - HYDROMENT ULTRA-SET BY BOSTIK, INC. CLEAN ALL SURFACES AND APPLY TO FULL DEPTH OF CONCRETE FLOOR SLAB
  - FIRE STOPPING SYSTEM - PACK WITH SAFING INSULATION AND CAULK AND SEAL PER REQUIREMENTS OF SECTION 078400, FIRESTOPPING
  - PROVIDE RISER CLAMP AS REQUIRED
  - PVDF PIPING